

Datasheet for ABIN928176  
**anti-ZNF138 antibody (Middle Region)**



[Go to Product page](#)

1 Image

## Overview

Quantity:	100 µL
Target:	ZNF138
Binding Specificity:	Middle Region
Reactivity:	Human, Rat, Cow, Mouse, Zebrafish (Danio rerio)
Host:	Rabbit
Clonality:	Polyclonal
Conjugate:	This ZNF138 antibody is un-conjugated
Application:	Western Blotting (WB)

## Product Details

Immunogen:	ZNF138 antibody was raised in rabbit using the middle region of ZNF138 as the immunogen
Cross-Reactivity:	Mouse (Murine), Rat (Rattus), Cow (Bovine), Zebrafish (Brachydanio rerio)
Purification:	Purified

## Target Details

Target:	ZNF138
Alternative Name:	ZNF138 ( <a href="#">ZNF138 Products</a> )
Background:	ZNF138 belongs to the krueppel C2H2-type zinc-finger protein family and may be involved in transcriptional regulation. Synonyms: Polyclonal ZNF138 antibody, Anti-ZNF138 antibody, zinc finger protein 138 antibody, pHZ-32 antibody.

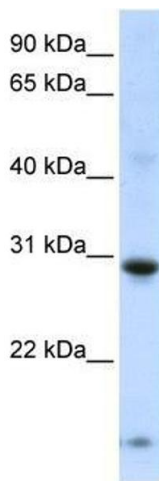
## Application Details

Application Notes:	WB: 0.2-1 µg/mL Optimal conditions should be determined by the investigator.
Comment:	ZNF138 Blocking Peptide, catalog no. 33R-9072, is also available for use as a blocking control in assays to test for specificity of this ZNF138 antibody
Restrictions:	For Research Use only

## Handling

Format:	Lyophilized
Concentration:	Lot specific
Buffer:	Lyophilized powder. Add 50 µL of distilled water. Final antibody concentration is 1 mg/mL in PBS buffer.
Handling Advice:	Avoid repeated freeze/thaw cycles.
Storage:	4 °C/-20 °C
Storage Comment:	Store at 4 °C, following reconstitution, aliquot and store at -20 °C.

## Images



### Western Blotting

**Image 1.** Western Blot showing ZNF138 antibody used at a concentration of 1-2 µg/ml to detect its target protein.