

Datasheet for ABIN928181  
**anti-MORF4 antibody (Middle Region)**



[Go to Product page](#)

1 Image

## Overview

Quantity:	100 µL
Target:	MORF4
Binding Specificity:	Middle Region
Reactivity:	Human, Mouse, Rat, Dog, Cow, Xenopus laevis, Zebrafish (Danio rerio)
Host:	Rabbit
Clonality:	Polyclonal
Conjugate:	This MORF4 antibody is un-conjugated
Application:	Western Blotting (WB)

## Product Details

Immunogen:	MORF4 antibody was raised in rabbit using the middle region of MORF4 as the immunogen
Cross-Reactivity:	Mouse (Murine), Rat (Rattus), Frog, Dog (Canine), Cow (Bovine), Zebrafish (Brachydanio rerio)
Purification:	Purified

## Target Details

Target:	MORF4
Alternative Name:	MORF4 ( <a href="#">MORF4 Products</a> )
Background:	Cellular senescence, the terminal nondividing state that normal cells enter following completion of their proliferative potential, is the dominant phenotype in hybrids of normal and immortal cells. Fusions of immortal human cell lines with each other have led to their assignment to 1 of several complementation groups. MORF4 is a gene on chromosome 4 that induces a

## Target Details

senescent-like phenotype in cell lines assigned to complementation group B. Synonyms: Polyclonal MORF4 antibody, Anti-MORF4 antibody, mortality factor 4 antibody, CSR antibody, CSRB antibody, SEN antibody, SEN1 antibody.

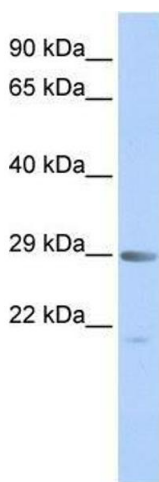
## Application Details

Application Notes:	WB: 0.2-1 µg/mL Optimal conditions should be determined by the investigator.
Comment:	MORF4 Blocking Peptide, catalog no. 33R-4813, is also available for use as a blocking control in assays to test for specificity of this MORF4 antibody
Restrictions:	For Research Use only

## Handling

Format:	Lyophilized
Concentration:	Lot specific
Buffer:	Lyophilized powder. Add 50 µL of distilled water. Final antibody concentration is 1 mg/mL in PBS buffer.
Handling Advice:	Avoid repeated freeze/thaw cycles.
Storage:	4 °C/-20 °C
Storage Comment:	Store at 4 °C, following reconstitution, aliquot and store at -20 °C.

## Images



### Western Blotting

**Image 1.** MORF4 antibody used at 0.2-1 ug/ml to detect target protein.