

Datasheet for ABIN928191  
**anti-MEIS3 antibody (Middle Region)**



[Go to Product page](#)

1 Image

## Overview

Quantity:	100 µL
Target:	MEIS3
Binding Specificity:	Middle Region
Reactivity:	Human, Rat, Mouse, Cow, Dog, Zebrafish (Danio rerio), Chicken, Xenopus laevis
Host:	Rabbit
Clonality:	Polyclonal
Conjugate:	This MEIS3 antibody is un-conjugated
Application:	Western Blotting (WB)

## Product Details

Immunogen:	MEIS3 antibody was raised in rabbit using the middle region of MEIS3 as the immunogen
Cross-Reactivity:	Mouse (Murine), Rat (Rattus), Zebrafish (Brachydanio rerio), Dog (Canine), Cow (Bovine), Chicken, Frog
Purification:	Purified

## Target Details

Target:	MEIS3
Alternative Name:	MEIS3 ( <a href="#">MEIS3 Products</a> )
Background:	MEIS3 belongs to the TALE/MEIS homeobox family. It contains 1 homeobox DNA-binding domain. The function of the MEIS3 protein remains unknown. Synonyms: Polyclonal MEIS3 antibody, Anti-MEIS3 antibody, Meis homeobox 3 antibody, DKFZp547H236 antibody, MRG2

## Target Details

antibody.

Pathways: [Chromatin Binding](#)

## Application Details

Application Notes: WB: 0.2-1 µg/mL  
Optimal conditions should be determined by the investigator.

Comment: MEIS3 Blocking Peptide, catalog no. 33R-3019, is also available for use as a blocking control in assays to test for specificity of this MEIS3 antibody

Restrictions: For Research Use only

## Handling

Format: Lyophilized

Concentration: Lot specific

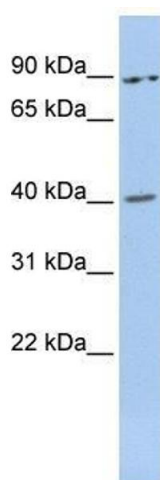
Buffer: Lyophilized powder. Add 50 µL of distilled water. Final antibody concentration is 1 mg/mL in PBS buffer.

Handling Advice: Avoid repeated freeze/thaw cycles.

Storage: 4 °C/-20 °C

Storage Comment: Store at 4 °C, following reconstitution, aliquot and store at -20 °C.

## Images



### Western Blotting

**Image 1.** MEIS3 antibody used at 0.2-1 ug/ml to detect target protein.