

Datasheet for ABIN928194 **anti-SEPN1 antibody (C-Term)**

3 Images



[Go to Product page](#)

Overview

Quantity:	100 µL
Target:	SEPN1
Binding Specificity:	C-Term
Reactivity:	Human, Mouse, Cow, Pig, Zebrafish (Danio rerio)
Host:	Rabbit
Clonality:	Polyclonal
Conjugate:	This SEPN1 antibody is un-conjugated
Application:	Western Blotting (WB)

Product Details

Immunogen:	SEPN1 antibody was raised in rabbit using the C terminal of SEPN1 as the immunogen
Cross-Reactivity:	Mouse (Murine), Pig (Porcine), Cow (Bovine), Zebrafish (Brachydanio rerio)
Purification:	Purified

Target Details

Target:	SEPN1
Alternative Name:	SEPN1 (SEPN1 Products)
Background:	SEPN1 is a selenoprotein, which contains a selenocysteine (Sec) residue at its active site. Mutations in SEPN1 gene cause the classical phenotype of multiminicore disease and congenital muscular dystrophy with spinal rigidity and restrictive respiratory syndrome. Synonyms: Polyclonal SEPN1 antibody, Anti-SEPN1 antibody, selenoprotein N, 1 antibody,

Target Details

FLJ24021 antibody, MDRS1 antibody, RSMD1 antibody, RSS antibody, SELN antibody.

Pathways: [Skeletal Muscle Fiber Development](#)

Application Details

Application Notes: Optimal conditions should be determined by the investigator.

Comment: SEPN1 Blocking Peptide, catalog no. 33R-1411, is also available for use as a blocking control in assays to test for specificity of this SEPN1 antibody

Restrictions: For Research Use only

Handling

Format: Lyophilized

Concentration: Lot specific

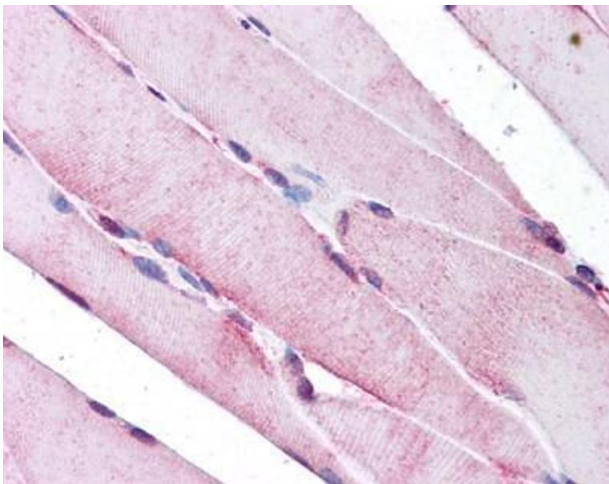
Buffer: Lyophilized powder. Add 50 μ L of distilled water. Final antibody concentration is 1 mg/mL in PBS buffer.

Handling Advice: Avoid repeated freeze/thaw cycles.

Storage: 4 °C/-20 °C

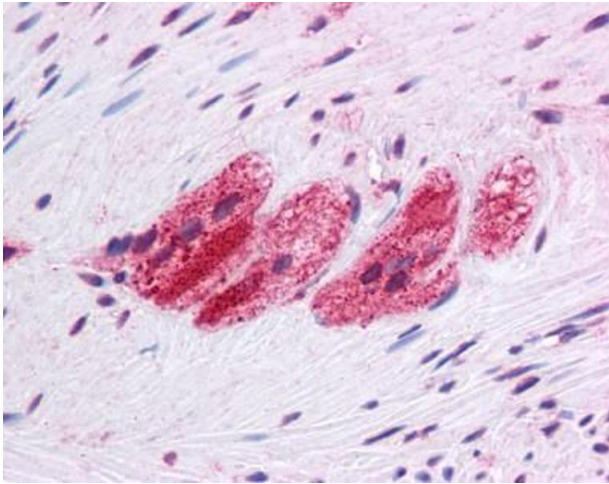
Storage Comment: Store at 4 °C, following reconstitution, aliquot and store at -20 °C.

Images



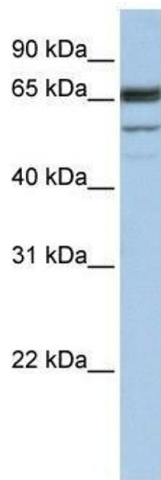
Immunohistochemistry

Image 1. SEPN1 antibody was used for immunohistochemistry at a concentration of 4-8 μ g/ml. Magnification is at 400X



Immunohistochemistry

Image 2. SEPN1 antibody was used for immunohistochemistry at a concentration of 4-8 ug/ml. Magnification is at 400X



Western Blotting

Image 3. Western Blot showing SEPN1 antibody used at a concentration of 1.0 ug/ml against Hela Cell Lysate