

Datasheet for ABIN928204
anti-METTLL16 antibody (N-Term)



[Go to Product page](#)

1 Image

Overview

Quantity:	100 µL
Target:	METTLL16
Binding Specificity:	N-Term
Reactivity:	Human, Mouse, Rat, Dog, Cow, Zebrafish (Danio rerio), Chicken, Xenopus laevis
Host:	Rabbit
Clonality:	Polyclonal
Conjugate:	This METTLL16 antibody is un-conjugated
Application:	Western Blotting (WB)

Product Details

Immunogen:	METT10 D antibody was raised in rabbit using the N terminal of METT10 as the immunogen
Cross-Reactivity:	Mouse (Murine), Rat (Rattus), Frog, Chicken, Dog (Canine), Cow (Bovine), Zebrafish (Brachydanio rerio)
Purification:	Purified

Target Details

Target:	METTLL16
Alternative Name:	METT10D (METTLL16 Products)
Background:	METT10D belongs to the methyltransferase superfamily, METT10D/rImF family. The exact function of METT10D remains unknown. Synonyms: Polyclonal METT10D antibody, Anti-METT10D antibody, methyltransferase 10 domain containing antibody, MGC3329 antibody.

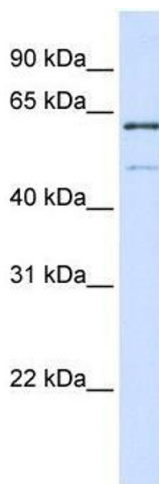
Application Details

Application Notes:	WB: 0.2-1 µg/mL Optimal conditions should be determined by the investigator.
Comment:	METT10D Blocking Peptide, catalog no. 33R-5222, is also available for use as a blocking control in assays to test for specificity of this METT10D antibody
Restrictions:	For Research Use only

Handling

Format:	Lyophilized
Concentration:	Lot specific
Buffer:	Lyophilized powder. Add 50 µL of distilled water. Final antibody concentration is 1 mg/mL in PBS buffer.
Handling Advice:	Avoid repeated freeze/thaw cycles.
Storage:	4 °C/-20 °C
Storage Comment:	Store at 4 °C, following reconstitution, aliquot and store at -20 °C.

Images



Western Blotting

Image 1. METT10D antibody used at 0.2-1 ug/ml to detect target protein.