

Datasheet for ABIN928224  
**anti-ZNF169 antibody (Middle Region)**



[Go to Product page](#)

3 Images

## Overview

Quantity:	100 µL
Target:	ZNF169
Binding Specificity:	Middle Region
Reactivity:	Human, Mouse, Rat, Cow, Dog, Chicken, Xenopus laevis
Host:	Rabbit
Clonality:	Polyclonal
Conjugate:	This ZNF169 antibody is un-conjugated
Application:	Western Blotting (WB), Immunohistochemistry (IHC)

## Product Details

Immunogen:	ZNF169 antibody was raised in rabbit using the middle region of ZNF169 as the immunogen
Cross-Reactivity:	Mouse (Murine), Rat (Rattus), Frog, Dog (Canine), Chicken, Cow (Bovine)
Purification:	Purified

## Target Details

Target:	ZNF169
Alternative Name:	ZNF169 ( <a href="#">ZNF169 Products</a> )
Background:	ZNF169 may be involved in transcriptional regulation. Synonyms: Polyclonal ZNF169 antibody, Anti-ZNF169 antibody, zinc finger protein 169 antibody, MGC51961 antibody.

## Application Details

Application Notes:	Optimal conditions should be determined by the investigator.
Comment:	ZNF169 Blocking Peptide, catalog no. 33R-3829, is also available for use as a blocking control in assays to test for specificity of this ZNF169 antibody
Restrictions:	For Research Use only

## Handling

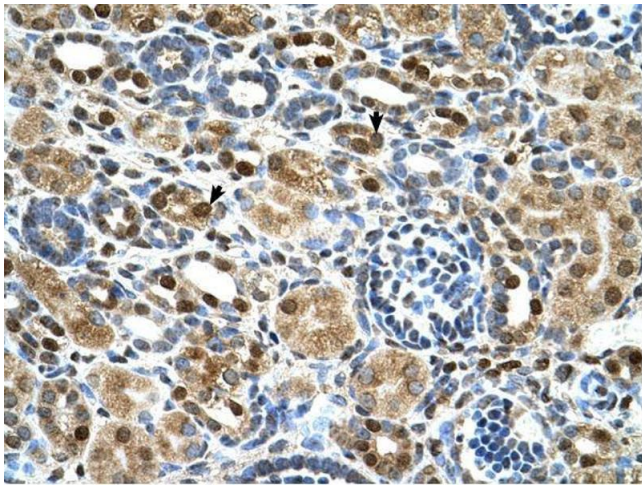
Format:	Lyophilized
Concentration:	Lot specific
Buffer:	Lyophilized powder. Add 50 $\mu$ L of distilled water. Final antibody concentration is 1 mg/mL in PBS buffer.
Handling Advice:	Avoid repeated freeze/thaw cycles.
Storage:	4 °C/-20 °C
Storage Comment:	Store at 4 °C, following reconstitution, aliquot and store at -20 °C.

## Images



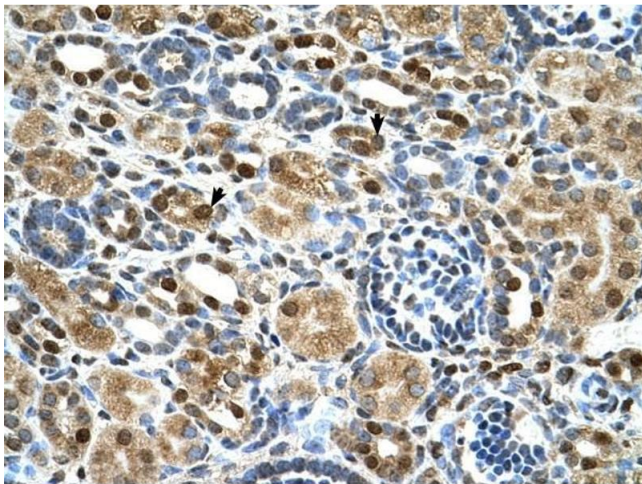
### Western Blotting

**Image 1.** Western Blot showing ZNF169 antibody used at a concentration of 0.25  $\mu$ g/ml against HepG2 Cell Lysate



#### Immunohistochemistry

**Image 2.** ZNF169 antibody was used for immunohistochemistry at a concentration of 4-8 ug/ml. Magnification is at 400X



#### Immunohistochemistry

**Image 3.** ZNF169 antibody was used for immunohistochemistry at a concentration of 4-8 ug/ml to stain Epithelial cells of renal tubule (arrows) in Human Kidney. Magnification is at 400X