

Datasheet for ABIN928226  
**anti-CERS6 antibody (N-Term)**



[Go to Product page](#)

1 Image

## Overview

Quantity:	100 µL
Target:	CERS6
Binding Specificity:	N-Term
Reactivity:	Human, Mouse, Rat
Host:	Rabbit
Clonality:	Polyclonal
Conjugate:	This CERS6 antibody is un-conjugated
Application:	Western Blotting (WB)

## Product Details

Immunogen:	LASS6 antibody was raised in rabbit using the N terminal of LASS6 as the immunogen
Cross-Reactivity:	Mouse (Murine), Rat (Rattus)
Purification:	Purified

## Target Details

Target:	CERS6
Alternative Name:	LASS6 ( <a href="#">CERS6 Products</a> )
Background:	LASS6 may be involved in sphingolipid synthesis or its regulation?. Synonyms: Polyclonal LASS6 antibody, Anti-LASS6 antibody, LAG1 homolog, ceramide synthase 6 antibody, CerS6 antibody, MGC129949 antibody, MGC129950 antibody.

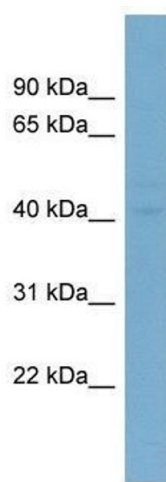
## Application Details

Application Notes:	WB: 0.2-1 µg/mL Optimal conditions should be determined by the investigator.
Comment:	LASS6 Blocking Peptide, catalog no. 33R-5663, is also available for use as a blocking control in assays to test for specificity of this LASS6 antibody
Restrictions:	For Research Use only

## Handling

Format:	Lyophilized
Concentration:	Lot specific
Buffer:	Lyophilized powder. Add 50 µL of distilled water. Final antibody concentration is 1 mg/mL in PBS buffer.
Handling Advice:	Avoid repeated freeze/thaw cycles.
Storage:	4 °C/-20 °C
Storage Comment:	Store at 4 °C, following reconstitution, aliquot and store at -20 °C.

## Images



### Western Blotting

**Image 1.** Western Blot showing LASS6 antibody used at a concentration of 1-2 µg/ml to detect its target protein.