

Datasheet for ABIN928242  
**anti-TPD52 antibody (C-Term)**



[Go to Product page](#)

1 Image

## Overview

Quantity:	100 µL
Target:	TPD52
Binding Specificity:	C-Term
Reactivity:	Human
Host:	Rabbit
Clonality:	Polyclonal
Conjugate:	This TPD52 antibody is un-conjugated
Application:	Western Blotting (WB)

## Product Details

Immunogen:	TPD52 antibody was raised in rabbit using the C terminal of TPD52 as the immunogen
Purification:	Purified

## Target Details

Target:	TPD52
Alternative Name:	TPD52 ( <a href="#">TPD52 Products</a> )
Background:	It belongs to the TPD52 family. Its exact function remains unknown. Synonyms: Polyclonal TPD52 antibody, Anti-TPD52 antibody, tumor protein D52 antibody, D52 antibody, N8L antibody, PC-1 antibody, PrLZ antibody, hD52 antibody.

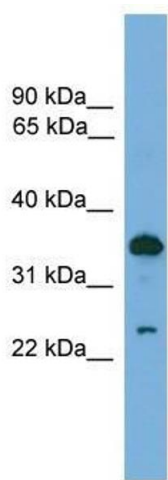
## Application Details

Application Notes:	WB: 0.2-1 µg/mL Optimal conditions should be determined by the investigator.
Comment:	TPD52 Blocking Peptide, catalog no. 33R-7875, is also available for use as a blocking control in assays to test for specificity of this TPD52 antibody
Restrictions:	For Research Use only

## Handling

Format:	Lyophilized
Concentration:	Lot specific
Buffer:	Lyophilized powder. Add 50 µL of distilled water. Final antibody concentration is 1 mg/mL in PBS buffer.
Handling Advice:	Avoid repeated freeze/thaw cycles.
Storage:	4 °C/-20 °C
Storage Comment:	Store at 4 °C, following reconstitution, aliquot and store at -20 °C.

## Images



### Western Blotting

**Image 1.** TPD52 antibody used at 0.2-1 ug/ml to detect target protein.