

Datasheet for ABIN928250
anti-POLG antibody (N-Term)



[Go to Product page](#)

1 Image

Overview

Quantity:	100 µL
Target:	POLG
Binding Specificity:	N-Term
Reactivity:	Human, Rat
Host:	Rabbit
Clonality:	Polyclonal
Conjugate:	This POLG antibody is un-conjugated
Application:	Western Blotting (WB)

Product Details

Immunogen:	Polg antibody was raised in rabbit using the N terminal of Polg as the immunogen
Cross-Reactivity:	Rat (Rattus)
Purification:	Purified

Target Details

Target:	POLG
Alternative Name:	Polg (POLG Products)
Target Type:	Viral Protein
Background:	Polg is involved in the replication of mitochondrial DNA. Synonyms: Polyclonal Polg antibody, Anti-Polg antibody, DNA polymerase subunit gamma-1 antibody.

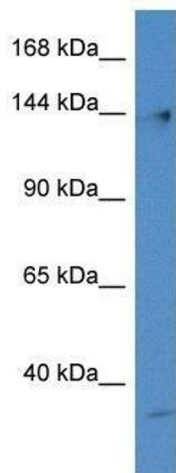
Application Details

Application Notes:	Optimal conditions should be determined by the investigator.
Comment:	Polg Blocking Peptide, catalog no. 33R-7512, is also available for use as a blocking control in assays to test for specificity of this Polg antibody
Restrictions:	For Research Use only

Handling

Format:	Lyophilized
Concentration:	Lot specific
Buffer:	Lyophilized powder. Add 50 μ L of distilled water. Final antibody concentration is 1 mg/mL in PBS buffer.
Handling Advice:	Avoid repeated freeze/thaw cycles.
Storage:	4 °C/-20 °C
Storage Comment:	Store at 4 °C, following reconstitution, aliquot and store at -20 °C.

Images



Western Blotting

Image 1. Western Blot showing Polg antibody used at a concentration of 1.0 ug/ml against Rat Lung Lysate