

Datasheet for ABIN928252
anti-GYG antibody (C-Term)



[Go to Product page](#)

1 Image

Overview

Quantity:	100 µL
Target:	GYG
Binding Specificity:	C-Term
Reactivity:	Mouse, Human
Host:	Rabbit
Clonality:	Polyclonal
Conjugate:	This GYG antibody is un-conjugated
Application:	Western Blotting (WB)

Product Details

Immunogen:	Gyg antibody was raised in rabbit using the C terminal of Gyg as the immunogen
Cross-Reactivity:	Mouse (Murine)
Purification:	Purified

Target Details

Target:	GYG
Alternative Name:	Gyg (GYG Products)
Background:	Self-glucosylates, via an inter-subunit mechanism, to form an oligosaccharide primer that serves as substrate for glycogen synthase. Synonyms: Polyclonal Gyg antibody, Anti-Gyg antibody, glycogenin antibody, AU017667 antibody, Gyg1 antibody.

Target Details

Pathways: [Cellular Glucan Metabolic Process](#)

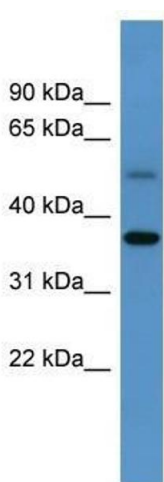
Application Details

Application Notes:	WB: 0.2-1 µg/mL Optimal conditions should be determined by the investigator.
Comment:	Gyg Blocking Peptide, catalog no. 33R-8362, is also available for use as a blocking control in assays to test for specificity of this Gyg antibody
Restrictions:	For Research Use only

Handling

Format:	Lyophilized
Concentration:	Lot specific
Buffer:	Lyophilized powder. Add 50 µL of distilled water. Final antibody concentration is 1 mg/mL in PBS buffer.
Handling Advice:	Avoid repeated freeze/thaw cycles.
Storage:	4 °C/-20 °C
Storage Comment:	Store at 4 °C, following reconstitution, aliquot and store at -20 °C.

Images



Western Blotting

Image 1. Gyg antibody used at 0.2-1 ug/ml to detect target protein.