

Datasheet for ABIN928254 **anti-STK25 antibody (C-Term)**



[Go to Product page](#)

1 Image

Overview

Quantity:	100 µL
Target:	STK25
Binding Specificity:	C-Term
Reactivity:	Human, Rat
Host:	Rabbit
Clonality:	Polyclonal
Conjugate:	This STK25 antibody is un-conjugated
Application:	Western Blotting (WB)

Product Details

Immunogen:	Stk25 antibody was raised in rabbit using the C terminal of Stk25 as the immunogen
Cross-Reactivity:	Rat (Rattus)
Purification:	Purified

Target Details

Target:	STK25
Alternative Name:	Stk25 (STK25 Products)
Background:	<p>Stk25 is an oxidant stress-activated serine/threonine kinase that may play a role in the response to environmental stress. Targets to the Golgi apparatus where it appears to regulate protein transport events, cell adhesion, and polarity complexes important for cell migration.</p> <p>Synonyms: Polyclonal Stk25 antibody, Anti-Stk25 antibody, serine/threonine kinase 25, STE20</p>

Target Details

homolog, yeast antibody, MGC94619 antibody, Stk25 antibody.

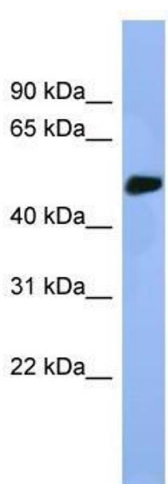
Application Details

Application Notes:	WB: 0.2-1 µg/mL Optimal conditions should be determined by the investigator.
Comment:	Stk25 Blocking Peptide, catalog no. 33R-9142, is also available for use as a blocking control in assays to test for specificity of this Stk25 antibody
Restrictions:	For Research Use only

Handling

Format:	Lyophilized
Concentration:	Lot specific
Buffer:	Lyophilized powder. Add 50 µL of distilled water. Final antibody concentration is 1 mg/mL in PBS buffer.
Handling Advice:	Avoid repeated freeze/thaw cycles.
Storage:	4 °C/-20 °C
Storage Comment:	Store at 4 °C, following reconstitution, aliquot and store at -20 °C.

Images



Western Blotting

Image 1. Stk25 antibody used at 0.2-1 ug/ml to detect target protein.