

Datasheet for ABIN928263
anti-PIGW antibody (Middle Region)



[Go to Product page](#)

1 Image

Overview

Quantity:	100 µL
Target:	PIGW
Binding Specificity:	Middle Region
Reactivity:	Human, Rat
Host:	Rabbit
Clonality:	Polyclonal
Conjugate:	This PIGW antibody is un-conjugated
Application:	Western Blotting (WB)

Product Details

Immunogen:	Pigw antibody was raised in rabbit using the middle region of Pigw as the immunogen
Cross-Reactivity:	Rat (Rattus)
Purification:	Purified

Target Details

Target:	PIGW
Alternative Name:	Pigw (PIGW Products)
Background:	Pigw is a probable acetyltransferase, which acetylates the inositol ring of phosphatidylinositol during biosynthesis of GPI-anchor. Acetylation during GPI-anchor biosynthesis is not essential for the subsequent mannosylation and is usually removed soon after the attachment of GPIs to proteins. Synonyms: Polyclonal Pigw antibody, Anti-Pigw antibody, phosphatidylinositol glycan

Target Details

anchor biosynthesis, class W antibody, Pigw antibody.

Pathways: [Inositol Metabolic Process](#)

Application Details

Application Notes: WB: 0.2-1 µg/mL
Optimal conditions should be determined by the investigator.

Comment: Pigw Blocking Peptide, catalog no. 33R-8528, is also available for use as a blocking control in assays to test for specificity of this Pigw antibody

Restrictions: For Research Use only

Handling

Format: Lyophilized

Concentration: Lot specific

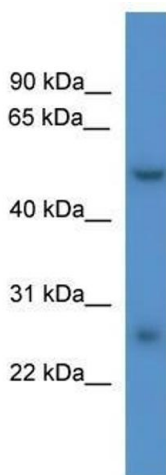
Buffer: Lyophilized powder. Add 50 µL of distilled water. Final antibody concentration is 1 mg/mL in PBS buffer.

Handling Advice: Avoid repeated freeze/thaw cycles.

Storage: 4 °C/-20 °C

Storage Comment: Store at 4 °C, following reconstitution, aliquot and store at -20 °C.

Images



Western Blotting

Image 1. Pigw antibody used at 0.2-1 ug/ml to detect target protein.