

Datasheet for ABIN928273  
**anti-ATP10D antibody (Middle Region)**



[Go to Product page](#)

1 Image

## Overview

Quantity:	100 µL
Target:	ATP10D
Binding Specificity:	Middle Region
Reactivity:	Human, Rat
Host:	Rabbit
Clonality:	Polyclonal
Conjugate:	This ATP10D antibody is un-conjugated
Application:	Western Blotting (WB)

## Product Details

Immunogen:	Atp10 d antibody was raised in rabbit using the middle region of Atp10 as the immunogen
Cross-Reactivity:	Rat (Rattus)
Purification:	Purified

## Target Details

Target:	ATP10D
Alternative Name:	Atp10d ( <a href="#">ATP10D Products</a> )
Background:	The function of Atp10d remains unknown. Synonyms: Polyclonal Atp10d antibody, Anti-Atp10d antibody, ATPase, class V, type 10D antibody, Atp10d antibody.

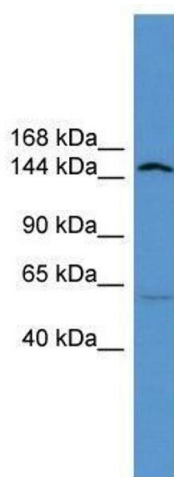
## Application Details

Application Notes:	WB: 0.2-1 µg/mL Optimal conditions should be determined by the investigator.
Comment:	Atp10d Blocking Peptide, catalog no. 33R-10050, is also available for use as a blocking control in assays to test for specificity of this Atp10d antibody
Restrictions:	For Research Use only

## Handling

Format:	Lyophilized
Concentration:	Lot specific
Buffer:	Lyophilized powder. Add 50 µL of distilled water. Final antibody concentration is 1 mg/mL in PBS buffer.
Handling Advice:	Avoid repeated freeze/thaw cycles.
Storage:	4 °C/-20 °C
Storage Comment:	Store at 4 °C, following reconstitution, aliquot and store at -20 °C.

## Images



### Western Blotting

**Image 1.** Atp10d antibody used at 0.2-1 ug/ml to detect target protein.