

Datasheet for ABIN928287
anti-YIPF2 antibody (Middle Region)



[Go to Product page](#)

1 Image

Overview

Quantity:	100 µL
Target:	YIPF2
Binding Specificity:	Middle Region
Reactivity:	Human
Host:	Rabbit
Clonality:	Polyclonal
Conjugate:	This YIPF2 antibody is un-conjugated
Application:	Western Blotting (WB)

Product Details

Immunogen:	YIPF2 antibody was raised in rabbit using the middle region of YIPF2 as the immunogen
Purification:	Purified

Target Details

Target:	YIPF2
Alternative Name:	YIPF2 (YIPF2 Products)
Background:	The function of YIPF2 remains unknown. Synonyms: Polyclonal YIPF2 antibody, Anti-YIPF2 antibody, Yip1 domain family, member 2 antibody, FinGER2 antibody, MGC3262 antibody.

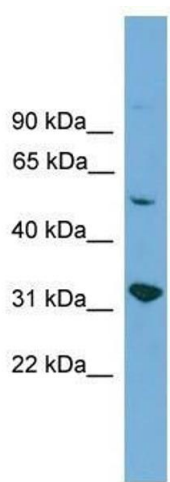
Application Details

Application Notes:	WB: 0.2-1 µg/mL Optimal conditions should be determined by the investigator.
Comment:	YIPF2 Blocking Peptide, catalog no. 33R-5483, is also available for use as a blocking control in assays to test for specificity of this YIPF2 antibody
Restrictions:	For Research Use only

Handling

Format:	Lyophilized
Concentration:	Lot specific
Buffer:	Lyophilized powder. Add 50 µL of distilled water. Final antibody concentration is 1 mg/mL in PBS buffer.
Handling Advice:	Avoid repeated freeze/thaw cycles.
Storage:	4 °C/-20 °C
Storage Comment:	Store at 4 °C, following reconstitution, aliquot and store at -20 °C.

Images



Western Blotting

Image 1. YIPF2 antibody used at 0.2-1 ug/ml to detect target protein.