

Datasheet for ABIN928302  
**anti-APOLD1 antibody (Middle Region)**



[Go to Product page](#)

1 Image

## Overview

Quantity:	100 µL
Target:	APOLD1
Binding Specificity:	Middle Region
Reactivity:	Human
Host:	Rabbit
Clonality:	Polyclonal
Conjugate:	This APOLD1 antibody is un-conjugated
Application:	Western Blotting (WB)

## Product Details

Immunogen:	APOLD1 antibody was raised in rabbit using the middle region of APOLD1 as the immunogen
Purification:	Purified

## Target Details

Target:	APOLD1
Alternative Name:	APOLD1 ( <a href="#">APOLD1 Products</a> )
Background:	APOLD1 is an endothelial cell early response protein that may play a role in regulation of endothelial cell signaling and vascular function. Synonyms: Polyclonal APOLD1 antibody, Anti-APOLD1 antibody, apolipoprotein L domain containing 1 antibody, DKFZp434F0318 antibody, FLJ25138 antibody, FLJ95166 antibody, VERGE antibody.

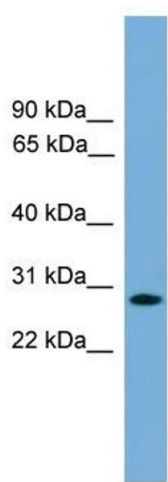
## Application Details

Application Notes:	WB: 0.2-1 µg/mL Optimal conditions should be determined by the investigator.
Comment:	APOLD1 Blocking Peptide, catalog no. 33R-5060, is also available for use as a blocking control in assays to test for specificity of this APOLD1 antibody
Restrictions:	For Research Use only

## Handling

Format:	Lyophilized
Concentration:	Lot specific
Buffer:	Lyophilized powder. Add 50 µL of distilled water. Final antibody concentration is 1 mg/mL in PBS buffer.
Handling Advice:	Avoid repeated freeze/thaw cycles.
Storage:	4 °C/-20 °C
Storage Comment:	Store at 4 °C, following reconstitution, aliquot and store at -20 °C.

## Images



### Western Blotting

**Image 1.** APOLD1 antibody used at 0.2-1 ug/ml to detect target protein.