

Datasheet for ABIN928313 **anti-BSCL2 antibody (C-Term)**



[Go to Product page](#)

1 Image

Overview

| | |
|----------------------|--------------------------------------|
| Quantity: | 100 µL |
| Target: | BSCL2 |
| Binding Specificity: | C-Term |
| Reactivity: | Human |
| Host: | Rabbit |
| Clonality: | Polyclonal |
| Conjugate: | This BSCL2 antibody is un-conjugated |
| Application: | Western Blotting (WB) |

Product Details

| | |
|---------------|--|
| Immunogen: | BSCL2 antibody was raised in rabbit using the C terminal of BSCL2 as the immunogen |
| Purification: | Purified |

Target Details

| | |
|-------------------|--|
| Target: | BSCL2 |
| Alternative Name: | BSCL2 (BSCL2 Products) |
| Background: | This gene encodes protein seipin, which is located in the endoplasmic reticulum and may be important for lipid droplet morphology. Mutations in this gene have been associated with congenital generalized lipodystrophy type 2 or Berardinelli-Seip syndrome, a rare autosomal recessive disease characterized by a near absence of adipose tissue and severe insulin resistance. Alternatively spliced transcript variants encoding different isoforms have been |

Target Details

found for this gene. Synonyms: Polyclonal BSCL2 antibody, Anti-BSCL2 antibody, Berardinelli-Seip congenital lipodystrophy 2, seipin antibody, GNG3LG antibody, HMN5 antibody, MGC4694 antibody, SPG17 antibody.

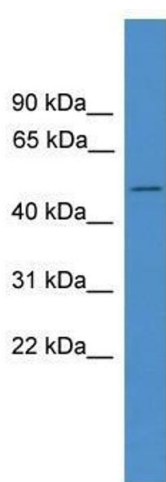
Application Details

| | |
|--------------------|--|
| Application Notes: | WB: 0.2-1 µg/mL Optimal conditions should be determined by the investigator. |
| Comment: | BSCL2 Blocking Peptide, catalog no. 33R-7521, is also available for use as a blocking control in assays to test for specificity of this BSCL2 antibody |
| Restrictions: | For Research Use only |

Handling

| | |
|------------------|--|
| Format: | Lyophilized |
| Concentration: | Lot specific |
| Buffer: | Lyophilized powder. Add 50 µL of distilled water. Final antibody concentration is 1 mg/mL in PBS buffer. |
| Handling Advice: | Avoid repeated freeze/thaw cycles. |
| Storage: | 4 °C/-20 °C |
| Storage Comment: | Store at 4 °C, following reconstitution, aliquot and store at -20 °C. |

Images



Western Blotting

Image 1. Western Blot showing BSCL2 antibody used at a concentration of 1-2 µg/ml to detect its target protein.