

Datasheet for ABIN928314 **anti-Bestrophin 3 antibody (C-Term)**



[Go to Product page](#)

1 Image

Overview

Quantity:	100 µL
Target:	Bestrophin 3 (BEST3)
Binding Specificity:	C-Term
Reactivity:	Human
Host:	Rabbit
Clonality:	Polyclonal
Conjugate:	This Bestrophin 3 antibody is un-conjugated
Application:	Western Blotting (WB)

Product Details

Immunogen:	BEST3 antibody was raised in rabbit using the C terminal of BEST3 as the immunogen
Purification:	Purified

Target Details

Target:	Bestrophin 3 (BEST3)
Alternative Name:	BEST3 (BEST3 Products)
Background:	<p>BEST3 belongs to the bestrophin family of anion channels, which includes BEST1, the gene mutant in vitelliform macular dystrophy, and 2 other BEST1-like genes, BEST2 and BEST4. Bestrophins are transmembrane (TM) proteins that share a homology region containing a high content of aromatic residues, including an invariant arg-phe-pro (RFP) motif. The bestrophin genes share a conserved gene structure, with almost identical sizes of the 8 RFP-TM domain-</p>

Target Details

encoding exons and highly conserved exon-intron boundaries. Synonyms: Polyclonal BEST3 antibody, Anti-BEST3 antibody, bestrophin 3 antibody, MGC13168 antibody, MGC40411 antibody, VMD2L3 antibody.

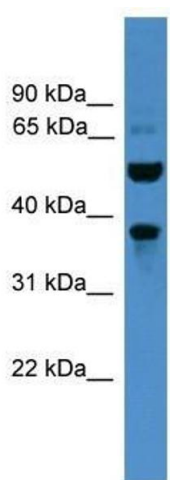
Application Details

Application Notes:	WB: 0.2-1 µg/mL Optimal conditions should be determined by the investigator.
Comment:	BEST3 Blocking Peptide, catalog no. 33R-9724, is also available for use as a blocking control in assays to test for specificity of this BEST3 antibody
Restrictions:	For Research Use only

Handling

Format:	Lyophilized
Concentration:	Lot specific
Buffer:	Lyophilized powder. Add 50 µL of distilled water. Final antibody concentration is 1 mg/mL in PBS buffer.
Handling Advice:	Avoid repeated freeze/thaw cycles.
Storage:	4 °C/-20 °C
Storage Comment:	Store at 4 °C, following reconstitution, aliquot and store at -20 °C.

Images



Western Blotting

Image 1. Western Blot showing BEST3 antibody used at a concentration of 1-2 µg/ml to detect its target protein.