

Datasheet for ABIN928318 **anti-PCDH21 antibody (N-Term)**



[Go to Product page](#)

1 Image

Overview

Quantity:	100 µL
Target:	PCDH21 (PCDH24)
Binding Specificity:	N-Term
Reactivity:	Human
Host:	Rabbit
Clonality:	Polyclonal
Conjugate:	This PCDH21 antibody is un-conjugated
Application:	Western Blotting (WB)

Product Details

Immunogen:	PCDH21 antibody was raised in rabbit using the N terminal of PCDH21 as the immunogen
Purification:	Purified

Target Details

Target:	PCDH21 (PCDH24)
Alternative Name:	PCDH21 (PCDH24 Products)
Background:	This gene is a member of the cadherin superfamily of calcium-dependent cell-cell adhesion molecules. This non-classical cadherin appears to be exclusively expressed in the mitral and tufted cells in the main and accessory olfactory bulbs of the brain, suggesting a possible role in the formation and maintenance of neuronal networks. Alternatively spliced transcript variants encoding different isoform have been identified. Synonyms: Polyclonal PCDH21 antibody, Anti-

Target Details

PCDH21 antibody, cadherin-related family member 1 antibody, DKFZp434A132 antibody, KIAA1775 antibody.

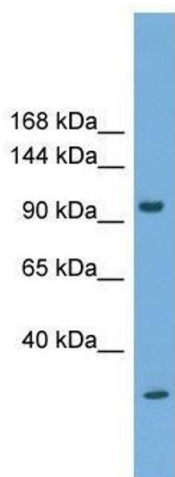
Application Details

Application Notes:	WB: 0.2-1 µg/mL Optimal conditions should be determined by the investigator.
Comment:	PCDH21 Blocking Peptide, catalog no. 33R-3566, is also available for use as a blocking control in assays to test for specificity of this PCDH21 antibody
Restrictions:	For Research Use only

Handling

Format:	Lyophilized
Concentration:	Lot specific
Buffer:	Lyophilized powder. Add 50 µL of distilled water. Final antibody concentration is 1 mg/mL in PBS buffer.
Handling Advice:	Avoid repeated freeze/thaw cycles.
Storage:	4 °C/-20 °C
Storage Comment:	Store at 4 °C, following reconstitution, aliquot and store at -20 °C.

Images



Western Blotting

Image 1. PCDH21 antibody used at 0.2-1 ug/ml to detect target protein.