

Datasheet for ABIN928321  
**anti-ANTXR2 antibody (N-Term)**



[Go to Product page](#)

1 Image

## Overview

Quantity:	100 µL
Target:	ANTXR2
Binding Specificity:	N-Term
Reactivity:	Human, Mouse
Host:	Rabbit
Clonality:	Polyclonal
Conjugate:	This ANTXR2 antibody is un-conjugated
Application:	Western Blotting (WB)

## Product Details

Immunogen:	Antxr2 antibody was raised in rabbit using the N terminal of Antxr2 as the immunogen
Cross-Reactivity:	Mouse (Murine)
Purification:	Purified

## Target Details

Target:	ANTXR2
Alternative Name:	Antxr2 ( <a href="#">ANTXR2 Products</a> )
Background:	Antxr2 is necessary for cellular interactions with laminin and the extracellular matrix. Synonyms: Polyclonal Antxr2 antibody, Anti-Antxr2 antibody, anthrax toxin receptor 2 antibody, 2310046B19Rik antibody, AW561899 antibody, CMG-2 antibody, CMG2 antibody, cl-35 antibody.

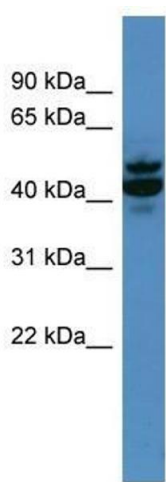
## Application Details

Application Notes:	WB: 0.2-1 µg/mL Optimal conditions should be determined by the investigator.
Comment:	Antxr2 Blocking Peptide, catalog no. 33R-3429, is also available for use as a blocking control in assays to test for specificity of this Antxr2 antibody
Restrictions:	For Research Use only

## Handling

Format:	Lyophilized
Concentration:	Lot specific
Buffer:	Lyophilized powder. Add 50 µL of distilled water. Final antibody concentration is 1 mg/mL in PBS buffer.
Handling Advice:	Avoid repeated freeze/thaw cycles.
Storage:	4 °C/-20 °C
Storage Comment:	Store at 4 °C, following reconstitution, aliquot and store at -20 °C.

## Images



### Western Blotting

**Image 1.** Antxr2 antibody used at 0.2-1 ug/ml to detect target protein.