

Datasheet for ABIN928326
anti-SPOPL antibody (N-Term)



[Go to Product page](#)

1 Image

Overview

Quantity:	100 µL
Target:	SPOPL
Binding Specificity:	N-Term
Reactivity:	Human, Mouse, Cow, Zebrafish (Danio rerio), Dog, Rat, Chicken, Xenopus laevis
Host:	Rabbit
Clonality:	Polyclonal
Conjugate:	This SPOPL antibody is un-conjugated
Application:	Western Blotting (WB)

Product Details

Immunogen:	SPOPL antibody was raised in rabbit using the N terminal of SPOPL as the immunogen
Cross-Reactivity:	Mouse (Murine), Rat (Rattus), Zebrafish (Brachydanio rerio), Frog, Dog (Canine), Chicken, Cow (Bovine)
Purification:	Purified

Target Details

Target:	SPOPL
Alternative Name:	SPOPL (SPOPL Products)
Background:	SPOPL belongs to the Tdpoz family. It contains 1 BTB (POZ) domain and 1 MATH domain. In complex with a cullin, SPOPL may act in ubiquitination and proteasomal degradation processes. Synonyms: Polyclonal SPOPL antibody, Anti-SPOPL antibody, speckle-type POZ

Target Details

protein-like antibody.

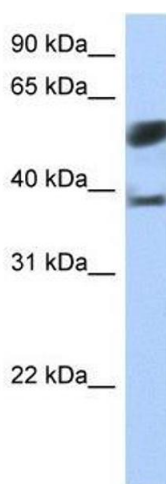
Application Details

Application Notes:	WB: 0.2-1 µg/mL Optimal conditions should be determined by the investigator.
Comment:	SPOPL Blocking Peptide, catalog no. 33R-4395, is also available for use as a blocking control in assays to test for specificity of this SPOPL antibody
Restrictions:	For Research Use only

Handling

Format:	Lyophilized
Concentration:	Lot specific
Buffer:	Lyophilized powder. Add 50 µL of distilled water. Final antibody concentration is 1 mg/mL in PBS buffer.
Handling Advice:	Avoid repeated freeze/thaw cycles.
Storage:	4 °C/-20 °C
Storage Comment:	Store at 4 °C, following reconstitution, aliquot and store at -20 °C.

Images



Western Blotting

Image 1. SPOPL antibody used at 5 ug/ml to detect target protein.