

Datasheet for ABIN928349 **anti-HELT antibody (Middle Region)**



[Go to Product page](#)

1 Image

Overview

Quantity:	100 µL
Target:	HELT
Binding Specificity:	Middle Region
Reactivity:	Mouse, Human, Rat, Cow, Zebrafish (Danio rerio)
Host:	Rabbit
Clonality:	Polyclonal
Conjugate:	This HELT antibody is un-conjugated
Application:	Western Blotting (WB)

Product Details

Immunogen:	HELT antibody was raised in rabbit using the middle region of HELT as the immunogen
Cross-Reactivity:	Mouse (Murine), Rat (Rattus), Zebrafish (Brachydanio rerio), Cow (Bovine)
Purification:	Purified

Target Details

Target:	HELT
Alternative Name:	HELT (HELT Products)
Background:	HELT belongs to the HEY family. It contains 1 basic helix-loop-helix (bHLH) domain and 1 orange domain. HELT is a transcriptional repressor which binds preferentially to the canonical E box sequence 5'-CACGCG-3'. Synonyms: Polyclonal HELT antibody, Anti-HELT antibody, HES/HEY-like transcription factor antibody, HCM1228 antibody, HESL antibody, Mgn antibody.

Target Details

Pathways: [Feeding Behaviour](#)

Application Details

Application Notes: WB: 0.2-1 µg/mL
Optimal conditions should be determined by the investigator.

Comment: HELT Blocking Peptide, catalog no. 33R-2595, is also available for use as a blocking control in assays to test for specificity of this HELT antibody

Restrictions: For Research Use only

Handling

Format: Lyophilized

Concentration: Lot specific

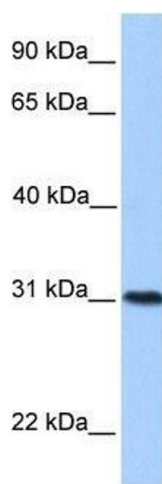
Buffer: Lyophilized powder. Add 50 µL of distilled water. Final antibody concentration is 1 mg/mL in PBS buffer.

Handling Advice: Avoid repeated freeze/thaw cycles.

Storage: 4 °C/-20 °C

Storage Comment: Store at 4 °C, following reconstitution, aliquot and store at -20 °C.

Images



Western Blotting

Image 1. HELT antibody used at 0.2-1 ug/ml to detect target protein.