

Datasheet for ABIN928350 **anti-ZNF226 antibody (C-Term)**



[Go to Product page](#)

1 Image

Overview

Quantity:	100 µL
Target:	ZNF226
Binding Specificity:	C-Term
Reactivity:	Human, Rat, Cow, Mouse, Dog, Zebrafish (Danio rerio)
Host:	Rabbit
Clonality:	Polyclonal
Conjugate:	This ZNF226 antibody is un-conjugated
Application:	Western Blotting (WB)

Product Details

Immunogen:	ZNF226 antibody was raised in rabbit using the C terminal of ZNF226 as the immunogen
Cross-Reactivity:	Mouse (Murine), Rat (Rattus), Cow (Bovine), Dog (Canine), Zebrafish (Brachydanio rerio)
Purification:	Purified

Target Details

Target:	ZNF226
Alternative Name:	ZNF226 (ZNF226 Products)
Background:	ZNF226 belongs to the krueppel C2H2-type zinc-finger protein family. It contains 19 C2H2-type zinc fingers and 1 KRAB domain. ZNF226 may be involved in transcriptional regulation. Synonyms: Polyclonal ZNF226 antibody, Anti-ZNF226 antibody, zinc finger protein 226 antibody.

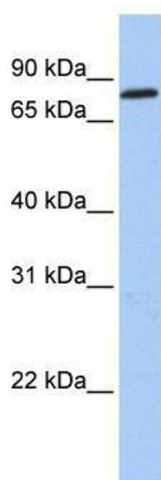
Application Details

Application Notes:	WB: 0.2-1 µg/mL Optimal conditions should be determined by the investigator.
Comment:	ZNF226 Blocking Peptide, catalog no. 33R-4646, is also available for use as a blocking control in assays to test for specificity of this ZNF226 antibody
Restrictions:	For Research Use only

Handling

Format:	Lyophilized
Concentration:	Lot specific
Buffer:	Lyophilized powder. Add 50 µL of distilled water. Final antibody concentration is 1 mg/mL in PBS buffer.
Handling Advice:	Avoid repeated freeze/thaw cycles.
Storage:	4 °C/-20 °C
Storage Comment:	Store at 4 °C, following reconstitution, aliquot and store at -20 °C.

Images



Western Blotting

Image 1. ZNF226 antibody used at 0.2-1 ug/ml to detect target protein.