

Datasheet for ABIN928359 **anti-ZXDC antibody (Middle Region)**



[Go to Product page](#)

1 Image

Overview

Quantity:	100 µL
Target:	ZXDC
Binding Specificity:	Middle Region
Reactivity:	Human, Mouse, Rat, Dog
Host:	Rabbit
Clonality:	Polyclonal
Conjugate:	This ZXDC antibody is un-conjugated
Application:	Western Blotting (WB)

Product Details

Immunogen:	ZXDC antibody was raised in rabbit using the middle region of ZXDC as the immunogen
Cross-Reactivity:	Mouse (Murine), Rat (Rattus), Dog (Canine)
Purification:	Purified

Target Details

Target:	ZXDC
Alternative Name:	ZXDC (ZXDC Products)
Background:	ZXDC belongs to the ZXD family. It contains 10 C2H2-type zinc fingers. ZXDC cooperates with CIITA to promote transcription of MHC class I and MHC class II genes. Synonyms: Polyclonal ZXDC antibody, Anti-ZXDC antibody, ZXD family zinc finger C antibody, DKFZp547N024 antibody, FLJ13861 antibody, MGC11349 antibody, ZXDL antibody.

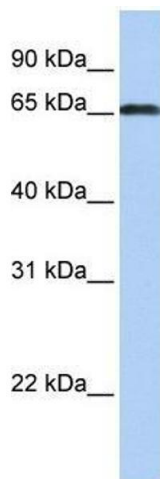
Application Details

Application Notes:	WB: 0.2-1 µg/mL Optimal conditions should be determined by the investigator.
Comment:	ZXDC Blocking Peptide, catalog no. 33R-6761, is also available for use as a blocking control in assays to test for specificity of this ZXDC antibody
Restrictions:	For Research Use only

Handling

Format:	Lyophilized
Concentration:	Lot specific
Buffer:	Lyophilized powder. Add 50 µL of distilled water. Final antibody concentration is 1 mg/mL in PBS buffer.
Handling Advice:	Avoid repeated freeze/thaw cycles.
Storage:	4 °C/-20 °C
Storage Comment:	Store at 4 °C, following reconstitution, aliquot and store at -20 °C.

Images



Western Blotting

Image 1. ZXDC antibody used at 0.2-1 µg/ml to detect target protein.