

Datasheet for ABIN928370
anti-FHL3 antibody (Middle Region)



[Go to Product page](#)

1 Image

Overview

Quantity:	100 µL
Target:	FHL3
Binding Specificity:	Middle Region
Reactivity:	Human, Mouse, Rat, Cow, Pig, Dog, Chicken, Drosophila melanogaster, Xenopus laevis
Host:	Rabbit
Clonality:	Polyclonal
Conjugate:	This FHL3 antibody is un-conjugated
Application:	Western Blotting (WB)

Product Details

Immunogen:	FHL3 antibody was raised in rabbit using the middle region of FHL3 as the immunogen
Cross-Reactivity:	Mouse (Murine), Rat (Rattus), Pig (Porcine), Dog (Canine), Fruit Fly (Drosophila melanogaster), Cow (Bovine), Frog, Chicken
Purification:	Purified

Target Details

Target:	FHL3
Alternative Name:	FHL3 (FHL3 Products)
Background:	FHL3 contains 4 LIM zinc-binding domains. It is expressed only in skeletal muscle. FHL3 association with MyoD may contribute to the regulation of MyoD-dependent transcription of muscle genes and thereby myogenesis. LIM proteins are defined by the possession of a highly

Target Details

conserved double zinc finger motif called the LIM domain. Synonyms: Polyclonal FHL3 antibody, Anti-FHL3 antibody, four and a half LIM domains 3 antibody, MGC19547 antibody, MGC23614 antibody, MGC8696 antibody, SLIM2 antibody.

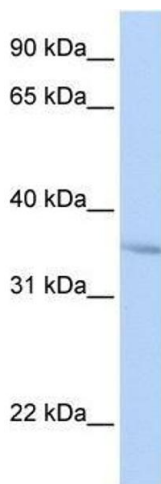
Application Details

Application Notes:	WB: 0.2-1 µg/mL Optimal conditions should be determined by the investigator.
Comment:	FHL3 Blocking Peptide, catalog no. 33R-3837, is also available for use as a blocking control in assays to test for specificity of this FHL3 antibody
Restrictions:	For Research Use only

Handling

Format:	Lyophilized
Concentration:	Lot specific
Buffer:	Lyophilized powder. Add 50 µL of distilled water. Final antibody concentration is 1 mg/mL in PBS buffer.
Handling Advice:	Avoid repeated freeze/thaw cycles.
Storage:	4 °C/-20 °C
Storage Comment:	Store at 4 °C, following reconstitution, aliquot and store at -20 °C.

Images



Western Blotting

Image 1. FHL3 antibody used at 0.2-1 ug/ml to detect target protein.