

Datasheet for ABIN928374
anti-SPRY2 antibody (N-Term)



[Go to Product page](#)

1 Image

Overview

Quantity:	100 µL
Target:	SPRY2
Binding Specificity:	N-Term
Reactivity:	Human, Mouse, Rat, Dog, Cow
Host:	Rabbit
Clonality:	Polyclonal
Conjugate:	This SPRY2 antibody is un-conjugated
Application:	Western Blotting (WB)

Product Details

Immunogen:	SPRY2 antibody was raised in rabbit using the N terminal of SPRY2 as the immunogen
Cross-Reactivity:	Mouse (Murine), Rat (Rattus), Dog (Canine), Cow (Bovine)
Purification:	Purified

Target Details

Target:	SPRY2
Alternative Name:	SPRY2 (SPRY2 Products)
Background:	SPRY2 is a protein belonging to the sprouty family. It contains a carboxyl-terminal cysteine-rich domain essential for the inhibitory activity on receptor tyrosine kinase signaling proteins and is required for growth factor stimulated translocation of the protein to membrane ruffles. In primary dermal endothelial cells this gene is transiently upregulated in response to fibroblast

Target Details

growth factor two. SPRY2 is indirectly involved in the non-cell autonomous inhibitory effect on fibroblast growth factor two signaling. Synonyms: Polyclonal SPRY2 antibody, Anti-SPRY2 antibody, sprouty homolog 2, Drosophila antibody, MGC23039 antibody, hSPRY2 antibody.

Pathways: [EGFR Signaling Pathway](#), [Sensory Perception of Sound](#), [EGFR Downregulation](#)

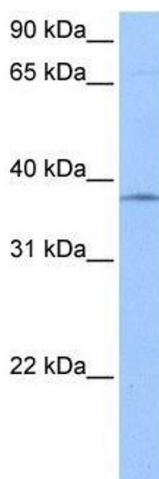
Application Details

Application Notes:	WB: 0.2-1 µg/mL Optimal conditions should be determined by the investigator.
Comment:	SPRY2 Blocking Peptide, catalog no. 33R-5896, is also available for use as a blocking control in assays to test for specificity of this SPRY2 antibody
Restrictions:	For Research Use only

Handling

Format:	Lyophilized
Concentration:	Lot specific
Buffer:	Lyophilized powder. Add 50 µL of distilled water. Final antibody concentration is 1 mg/mL in PBS buffer.
Handling Advice:	Avoid repeated freeze/thaw cycles.
Storage:	4 °C/-20 °C
Storage Comment:	Store at 4 °C, following reconstitution, aliquot and store at -20 °C.

Images



Western Blotting

Image 1. SPRY2 antibody used at 0.2-1 ug/ml to detect target protein.