

Datasheet for ABIN928379

anti-NUMA1 antibody (C-Term)[Go to Product page](#)**1** Image

Overview

Quantity:	100 µL
Target:	NUMA1
Binding Specificity:	C-Term
Reactivity:	Human, Mouse, Rat, Chicken, Xenopus laevis
Host:	Rabbit
Clonality:	Polyclonal
Conjugate:	This NUMA1 antibody is un-conjugated
Application:	Western Blotting (WB)

Product Details

Immunogen:	NUMA1 antibody was raised in rabbit using the C terminal of NUMA1 as the immunogen
Cross-Reactivity:	Rat (Rattus), Mouse (Murine), Chicken, Frog
Purification:	Purified

Target Details

Target:	NUMA1
Alternative Name:	NUMA1 (NUMA1 Products)
Background:	NuMA is a structural element in maintaining nuclear integrity. A critical spindle pole-associated mechanism, called the END (Emi1/NuMA/dynein-dynactin) network, spatially restricts APC/C activity in early mitosis. The entire coding region and exon-intron boundaries of NuMa were screened in 92 familial breast cancer patients. But the results do not support the role of NuMA

Target Details

	variants as breast cancer susceptibility alleles. Synonyms: Polyclonal NUMA1 antibody, Anti-NUMA1 antibody, nuclear mitotic apparatus protein 1 antibody, NUMA antibody.
Pathways:	Caspase Cascade in Apoptosis, Regulation of Actin Filament Polymerization, M Phase

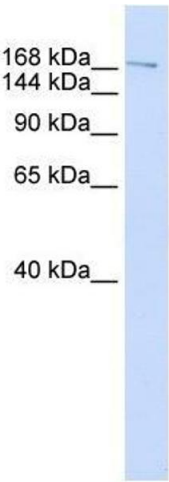
Application Details

Application Notes:	WB: 0.2-1 µg/mL Optimal conditions should be determined by the investigator.
Comment:	NUMA1 Blocking Peptide, catalog no. 33R-1455, is also available for use as a blocking control in assays to test for specificity of this NUMA1 antibody
Restrictions:	For Research Use only

Handling

Format:	Lyophilized
Concentration:	Lot specific
Buffer:	Lyophilized powder. Add 50 µL of distilled water. Final antibody concentration is 1 mg/mL in PBS buffer.
Handling Advice:	Avoid repeated freeze/thaw cycles.
Storage:	4 °C/-20 °C
Storage Comment:	Store at 4 °C, following reconstitution, aliquot and store at -20 °C.

Images



Western Blotting

Image 1. NUMA1 antibody used at 0.2-1 ug/ml to detect target protein.