

Datasheet for ABIN928381
anti-C1D antibody (Middle Region)



[Go to Product page](#)

1 Image

Overview

Quantity:	100 µL
Target:	C1D
Binding Specificity:	Middle Region
Reactivity:	Human, Mouse, Rat, Dog, Cow, Zebrafish (Danio rerio), Chicken, Xenopus laevis
Host:	Rabbit
Clonality:	Polyclonal
Conjugate:	This C1D antibody is un-conjugated
Application:	Western Blotting (WB)

Product Details

Immunogen:	C1 D antibody was raised in rabbit using the middle region of C1 as the immunogen
Cross-Reactivity:	Mouse (Murine), Rat (Rattus), Cow (Bovine), Dog (Canine), Chicken, Zebrafish (Brachydanio rerio), Frog
Purification:	Purified

Target Details

Target:	C1D
Alternative Name:	C1D (C1D Products)
Background:	C1D is a DNA binding and apoptosis-inducing protein and is localized in the nucleus. It is also a Rac3-interacting protein which acts as a corepressor for the thyroid hormone receptor. C1D is thought to regulate TRAX/Translin complex formation. The protein encoded by this gene is a

Target Details

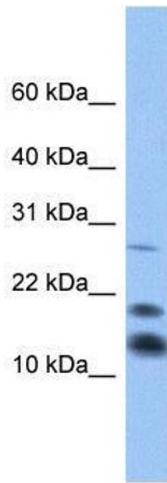
DNA binding and apoptosis-inducing protein and is localized in the nucleus. It is also a Rac3-interacting protein which acts as a corepressor for the thyroid hormone receptor. This protein is thought to regulate TRAX/Translin complex formation. Synonyms: Polyclonal C1D antibody, Anti-C1D antibody, nuclear DNA-binding protein antibody, MGC12261 antibody, MGC14659 antibody, SUNCOR antibody.

Application Details

Application Notes:	WB: 0.2-1 µg/mL Optimal conditions should be determined by the investigator.
Comment:	C1D Blocking Peptide, catalog no. 33R-4854, is also available for use as a blocking control in assays to test for specificity of this C1D antibody
Restrictions:	For Research Use only

Handling

Format:	Lyophilized
Concentration:	Lot specific
Buffer:	Lyophilized powder. Add 50 µL of distilled water. Final antibody concentration is 1 mg/mL in PBS buffer.
Handling Advice:	Avoid repeated freeze/thaw cycles.
Storage:	4 °C/-20 °C
Storage Comment:	Store at 4 °C, following reconstitution, aliquot and store at -20 °C.



Western Blotting

Image 1. C1D antibody used at 0.2-1 ug/ml to detect target protein.