

Datasheet for ABIN928388 **anti-PWP1 antibody (C-Term)**



[Go to Product page](#)

1 Image

Overview

Quantity:	100 µL
Target:	PWP1
Binding Specificity:	C-Term
Reactivity:	Human, Mouse, Rat, Cow, Dog, Rabbit
Host:	Rabbit
Clonality:	Polyclonal
Conjugate:	This PWP1 antibody is un-conjugated
Application:	Western Blotting (WB)

Product Details

Immunogen:	PWP1 antibody was raised in rabbit using the C terminal of PWP1 as the immunogen
Cross-Reactivity:	Mouse (Murine), Rat (Rattus), Rabbit, Dog (Canine), Cow (Bovine)
Purification:	Purified

Target Details

Target:	PWP1
Alternative Name:	PWP1 (PWP1 Products)
Background:	PWP1 belongs to the WD repeat PWP1 family. It contains 5 WD repeats. PWP1 may play an important role in cell growth and/or transcription. Synonyms: Polyclonal PWP1 antibody, Anti-PWP1 antibody, PWP1 homolog, <i>S. cerevisiae</i> antibody, IEF-SSP-9502 antibody.

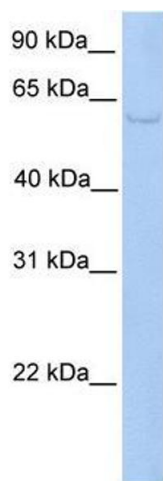
Application Details

Application Notes:	WB: 0.2-1 µg/mL Optimal conditions should be determined by the investigator.
Comment:	PWP1 Blocking Peptide, catalog no. 33R-2857, is also available for use as a blocking control in assays to test for specificity of this PWP1 antibody
Restrictions:	For Research Use only

Handling

Format:	Lyophilized
Concentration:	Lot specific
Buffer:	Lyophilized powder. Add 50 µL of distilled water. Final antibody concentration is 1 mg/mL in PBS buffer.
Handling Advice:	Avoid repeated freeze/thaw cycles.
Storage:	4 °C/-20 °C
Storage Comment:	Store at 4 °C, following reconstitution, aliquot and store at -20 °C.

Images



Western Blotting

Image 1. PWP1 antibody used at 0.2-1 ug/ml to detect target protein.