

Datasheet for ABIN928392 **anti-MED4 antibody (C-Term)**



[Go to Product page](#)

3 Images

Overview

Quantity:	100 µL
Target:	MED4
Binding Specificity:	C-Term
Reactivity:	Human, Rat, Mouse, Cow, Zebrafish (Danio rerio)
Host:	Rabbit
Clonality:	Polyclonal
Conjugate:	This MED4 antibody is un-conjugated
Application:	Western Blotting (WB)

Product Details

Immunogen:	MED4 antibody was raised in rabbit using the C terminal of MED4 as the immunogen
Cross-Reactivity:	Mouse (Murine), Rat (Rattus), Cow (Bovine), Zebrafish (Brachydanio rerio)
Purification:	Purified

Target Details

Target:	MED4
Alternative Name:	MED4 (MED4 Products)
Background:	TMED4 contains 1 GOLD domain and belongs to the EMP24/GP25L family. The function of this protein remains unknown. Synonyms: Polyclonal MED4 antibody, Anti-MED4 antibody, mediator complex subunit 4 antibody, DRIP36 antibody, FLJ10956 antibody, HSPC126 antibody, RP11-90M2.2 antibody, TRAP36 antibody, VDRIP antibody.

Target Details

Pathways: [Intracellular Steroid Hormone Receptor Signaling Pathway](#), [Nuclear Hormone Receptor Binding](#), [Regulation of Lipid Metabolism by PPARalpha](#)

Application Details

Application Notes: Optimal conditions should be determined by the investigator.

Comment: MED4 Blocking Peptide, catalog no. 33R-1435, is also available for use as a blocking control in assays to test for specificity of this MED4 antibody

Restrictions: For Research Use only

Handling

Format: Lyophilized

Concentration: Lot specific

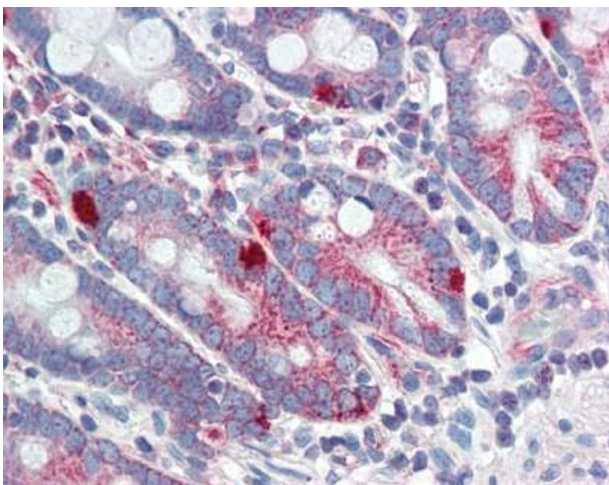
Buffer: Lyophilized powder. Add 50 μ L of distilled water. Final antibody concentration is 1 mg/mL in PBS buffer.

Handling Advice: Avoid repeated freeze/thaw cycles.

Storage: 4 $^{\circ}$ C/-20 $^{\circ}$ C

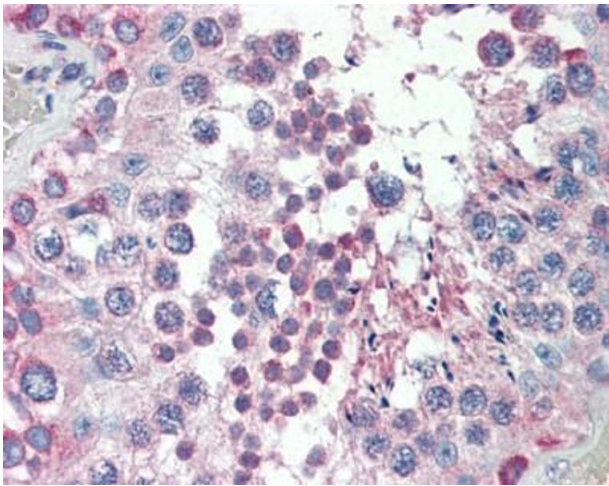
Storage Comment: Store at 4 $^{\circ}$ C, following reconstitution, aliquot and store at -20 $^{\circ}$ C.

Images



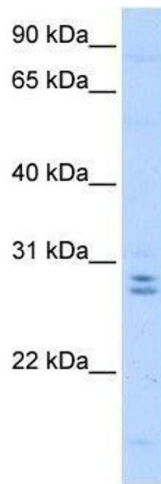
Immunohistochemistry

Image 1. MED4 antibody was used for immunohistochemistry at a concentration of 4-8 μ g/ml. Magnification is at 400X



Immunohistochemistry

Image 2. MED4 antibody was used for immunohistochemistry at a concentration of 4-8 ug/ml. Magnification is at 400X



Western Blotting

Image 3. Western Blot showing MED4 antibody used at a concentration of 0.5 ug/ml against HepG2 Cell Lysate