

## Datasheet for ABIN928393 **anti-LIMD1 antibody (N-Term)**



[Go to Product page](#)

### 2 Images

#### Overview

Quantity:	100 µL
Target:	LIMD1
Binding Specificity:	N-Term
Reactivity:	Mouse, Human, Rat, Dog, Xenopus laevis
Host:	Rabbit
Clonality:	Polyclonal
Conjugate:	This LIMD1 antibody is un-conjugated
Application:	Western Blotting (WB)

#### Product Details

Immunogen:	LIMD1 antibody was raised in rabbit using the N terminal of LIMD1 as the immunogen
Cross-Reactivity:	Mouse (Murine), Rat (Rattus), Dog (Canine), Frog
Purification:	Purified

#### Target Details

Target:	LIMD1
Alternative Name:	LIMD1 ( <a href="#">LIMD1 Products</a> )
Background:	LIMD1 may be involved in cell anchoring via focal adhesions and in the cell cycle, particularly during mitosis. LIMD1 functionally interacts with pRB and the loss of which promotes lung carcinogenesis. Some breast tumors also have altered expression of LIMD1 RNA. LIMD1 may represent a critical tumor suppressor gene. Synonyms: Polyclonal LIMD1 antibody, Anti-LIMD1

## Target Details

antibody, LIM domains containing 1 antibody.

Pathways: [Ribonucleoprotein Complex Subunit Organization](#)

## Application Details

Application Notes: Optimal conditions should be determined by the investigator.

Comment: LIMD1 Blocking Peptide, catalog no. 33R-5846, is also available for use as a blocking control in assays to test for specificity of this LIMD1 antibody

Restrictions: For Research Use only

## Handling

Format: Lyophilized

Concentration: Lot specific

Buffer: Lyophilized powder. Add 50  $\mu$ L of distilled water. Final antibody concentration is 1 mg/mL in PBS buffer.

Handling Advice: Avoid repeated freeze/thaw cycles.

Storage: 4  $^{\circ}$ C/-20  $^{\circ}$ C

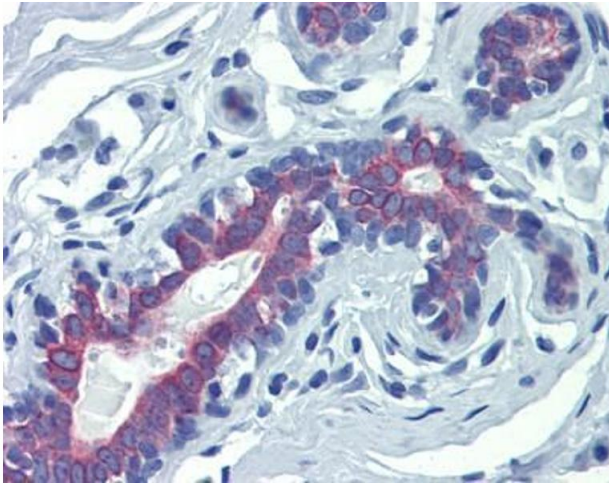
Storage Comment: Store at 4  $^{\circ}$ C, following reconstitution, aliquot and store at -20  $^{\circ}$ C.

## Images



### Western Blotting

**Image 1.** Western Blot showing LIMD1 antibody used at a concentration of 1.0  $\mu$ g/ml against HepG2 Cell Lysate



### Immunohistochemistry

**Image 2.** LIMD1 antibody was used for immunohistochemistry at a concentration of 4-8 ug/ml. Magnification is at 400X