

Datasheet for ABIN928394
anti-TRAPPC2 antibody (Middle Region)



[Go to Product page](#)

1 Image

Overview

Quantity:	100 µL
Target:	TRAPPC2
Binding Specificity:	Middle Region
Reactivity:	Human, Mouse, Rat, Cow, Dog, Chicken, Xenopus laevis
Host:	Rabbit
Clonality:	Polyclonal
Conjugate:	This TRAPPC2 antibody is un-conjugated
Application:	Western Blotting (WB)

Product Details

Immunogen:	TRAPPC2 antibody was raised in rabbit using the middle region of TRAPPC2 as the immunogen
Cross-Reactivity:	Mouse (Murine), Rat (Rattus), Dog (Canine), Cow (Bovine), Chicken, Frog
Purification:	Purified

Target Details

Target:	TRAPPC2
Alternative Name:	TRAPPC2 (TRAPPC2 Products)
Background:	TRAPPC2 prevents MBP1-mediated transcriptional repression and antagonizes MBP1-mediated cell death. TRAPPC2 may play a role in vesicular transport from endoplasmic reticulum to Golgi. The protein encoded by this gene is thought to be part of a large multisubunit complex involved in the targeting and fusion of endoplasmic reticulum-to-Golgi transport

Target Details

vesicles with their acceptor compartment. In addition, the encoded protein can bind MBP1 and block its transcriptional repression capability. Synonyms: Polyclonal TRAPPC2 antibody, Anti-TRAPPC2 antibody, trafficking protein particle complex 2 antibody, MIP-2A antibody, SEDL antibody, SEDT antibody, TRS20 antibody, ZNF547L antibody, hYP38334 antibody.

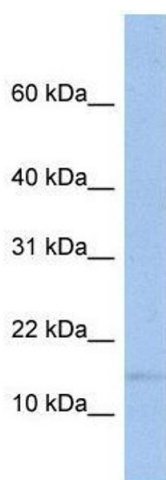
Application Details

Application Notes:	WB: 0.2-1 µg/mL Optimal conditions should be determined by the investigator.
Comment:	TRAPPC2 Blocking Peptide, catalog no. 33R-8115, is also available for use as a blocking control in assays to test for specificity of this TRAPPC2 antibody
Restrictions:	For Research Use only

Handling

Format:	Lyophilized
Concentration:	Lot specific
Buffer:	Lyophilized powder. Add 50 µL of distilled water. Final antibody concentration is 1 mg/mL in PBS buffer.
Handling Advice:	Avoid repeated freeze/thaw cycles.
Storage:	4 °C/-20 °C
Storage Comment:	Store at 4 °C, following reconstitution, aliquot and store at -20 °C.

Images



Western Blotting

Image 1. TRAPPC2 antibody used at 0.2-1 µg/ml to detect target protein.