

Datasheet for ABIN928396 **anti-SIN3B antibody (Middle Region)**



[Go to Product page](#)

1 Image

Overview

Quantity:	100 µL
Target:	SIN3B
Binding Specificity:	Middle Region
Reactivity:	Human, Mouse, Cow, Zebrafish (Danio rerio), Xenopus laevis
Host:	Rabbit
Clonality:	Polyclonal
Conjugate:	This SIN3B antibody is un-conjugated
Application:	Western Blotting (WB)

Product Details

Immunogen:	SIN3 B antibody was raised in rabbit using the middle region of SIN3 as the immunogen
Cross-Reactivity:	Mouse (Murine), Cow (Bovine), Frog, Zebrafish (Brachydanio rerio)
Purification:	Purified

Target Details

Target:	SIN3B
Alternative Name:	SIN3B (SIN3B Products)
Background:	<p>SIN3B acts as a transcriptional repressor. It interacts with MXI1 to repress MYC responsive genes and antagonize MYC oncogenic activities. Also, it interacts with MAD-MAX heterodimers by binding to MAD. The heterodimer then represses transcription by tethering SIN3B to DNA.</p> <p>The gene is also able to form a complex with FOXK1 which represses transcription. Synonyms:</p>

Target Details

Polyclonal SIN3B antibody, Anti-SIN3B antibody, SIN3 homolog B, transcription regulator, yeast antibody, KIAA0700 antibody.

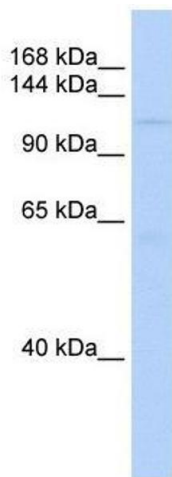
Application Details

Application Notes:	WB: 0.2-1 µg/mL Optimal conditions should be determined by the investigator.
Comment:	SIN3B Blocking Peptide, catalog no. 33R-5540, is also available for use as a blocking control in assays to test for specificity of this SIN3B antibody
Restrictions:	For Research Use only

Handling

Format:	Lyophilized
Concentration:	Lot specific
Buffer:	Lyophilized powder. Add 50 µL of distilled water. Final antibody concentration is 1 mg/mL in PBS buffer.
Handling Advice:	Avoid repeated freeze/thaw cycles.
Storage:	4 °C/-20 °C
Storage Comment:	Store at 4 °C, following reconstitution, aliquot and store at -20 °C.

Images



Western Blotting

Image 1. SIN3B antibody used at 0.2-1 ug/ml to detect target protein.