

Datasheet for ABIN928405
anti-TIPIN antibody (Middle Region)



[Go to Product page](#)

1 Image

Overview

Quantity:	100 µL
Target:	TIPIN
Binding Specificity:	Middle Region
Reactivity:	Human, Mouse, Rat, Cow, Dog
Host:	Rabbit
Clonality:	Polyclonal
Conjugate:	This TIPIN antibody is un-conjugated
Application:	Western Blotting (WB)

Product Details

Immunogen:	TIPIN antibody was raised in rabbit using the middle region of TIPIN as the immunogen
Cross-Reactivity:	Mouse (Murine), Rat (Rattus), Dog (Canine), Cow (Bovine)
Purification:	Purified

Target Details

Target:	TIPIN
Alternative Name:	TIPIN (TIPIN Products)
Background:	TIPIN belongs to the CSM3 family. TIPIN is required for normal progression of S-phase. It is important for cell survival after DNA damage or replication stress. TIPIN may be specifically required for the ATR-CHK1 pathway in the replication checkpoint induced by hydroxyurea or ultraviolet light. Synonyms: Polyclonal TIPIN antibody, Anti-TIPIN antibody, TIMELESS

Target Details

interacting protein antibody, FLJ20516 antibody.

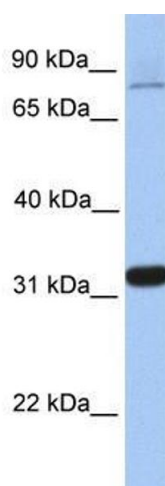
Application Details

Application Notes:	WB: 0.2-1 µg/mL Optimal conditions should be determined by the investigator.
Comment:	TIPIN Blocking Peptide, catalog no. 33R-8402, is also available for use as a blocking control in assays to test for specificity of this TIPIN antibody
Restrictions:	For Research Use only

Handling

Format:	Lyophilized
Concentration:	Lot specific
Buffer:	Lyophilized powder. Add 50 µL of distilled water. Final antibody concentration is 1 mg/mL in PBS buffer.
Handling Advice:	Avoid repeated freeze/thaw cycles.
Storage:	4 °C/-20 °C
Storage Comment:	Store at 4 °C, following reconstitution, aliquot and store at -20 °C.

Images



Western Blotting

Image 1. TIPIN antibody used at 0.2-1 µg/ml to detect target protein.