

Datasheet for ABIN928406 **anti-BRF2 antibody (N-Term)**



[Go to Product page](#)

1 Image

Overview

Quantity:	100 µL
Target:	BRF2
Binding Specificity:	N-Term
Reactivity:	Human, Mouse, Rat, Cow, Dog
Host:	Rabbit
Clonality:	Polyclonal
Conjugate:	This BRF2 antibody is un-conjugated
Application:	Western Blotting (WB)

Product Details

Immunogen:	BRF2 antibody was raised in rabbit using the N terminal of BRF2 as the immunogen
Cross-Reactivity:	Mouse (Murine), Rat (Rattus), Dog (Canine), Cow (Bovine)
Purification:	Purified

Target Details

Target:	BRF2
Alternative Name:	BRF2 (BRF2 Products)
Background:	BRF2 is the general activator of RNA polymerase III transcription. BRF2 is the factor exclusively required for RNA polymerase III transcription of genes with promoter elements upstream of the initiation sites. Synonyms: Polyclonal BRF2 antibody, Anti-BRF2 antibody, BRF2, subunit of RNA polymerase III transcription initiation factor, BRF1-like antibody, BRFU antibody, FLJ11052

Target Details

antibody, TFIIIB50 antibody.

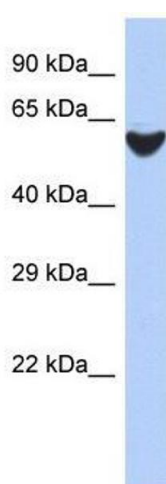
Application Details

Application Notes:	WB: 0.2-1 µg/mL Optimal conditions should be determined by the investigator.
Comment:	BRF2 Blocking Peptide, catalog no. 33R-9840, is also available for use as a blocking control in assays to test for specificity of this BRF2 antibody
Restrictions:	For Research Use only

Handling

Format:	Lyophilized
Concentration:	Lot specific
Buffer:	Lyophilized powder. Add 50 µL of distilled water. Final antibody concentration is 1 mg/mL in PBS buffer.
Handling Advice:	Avoid repeated freeze/thaw cycles.
Storage:	4 °C/-20 °C
Storage Comment:	Store at 4 °C, following reconstitution, aliquot and store at -20 °C.

Images



Western Blotting

Image 1. BRF2 antibody used at 0.2-1 ug/ml to detect target protein.