

Datasheet for ABIN928408  
**anti-ZC3H15 antibody (Middle Region)**



[Go to Product page](#)

1 Image

## Overview

Quantity:	100 µL
Target:	ZC3H15
Binding Specificity:	Middle Region
Reactivity:	Human, Mouse, Rat, Cow, Zebrafish (Danio rerio), Chicken, Drosophila melanogaster, Xenopus laevis
Host:	Rabbit
Clonality:	Polyclonal
Conjugate:	This ZC3H15 antibody is un-conjugated
Application:	Western Blotting (WB)

## Product Details

Immunogen:	ZC3 H15 antibody was raised in rabbit using the middle region of ZC3 15 as the immunogen
Cross-Reactivity:	Mouse (Murine), Rat (Rattus), Cow (Bovine), Fruit Fly (Drosophila melanogaster), Chicken, Zebrafish (Brachydanio rerio), Frog
Purification:	Purified

## Target Details

Target:	ZC3H15
Alternative Name:	ZC3H15 ( <a href="#">ZC3H15 Products</a> )
Background:	ZC3H15 belongs to the ZC3H15/TMA46 family. It contains 2 C3H1-type zinc fingers. ZC3H15 protects DRG1 from proteolytic degradation. Synonyms: Polyclonal ZC3H15 antibody, Anti-

## Target Details

ZC3H15 antibody, zinc finger CCCH-type containing 15 antibody, HT010 antibody, LEREPO4 antibody, MSTP012 antibody.

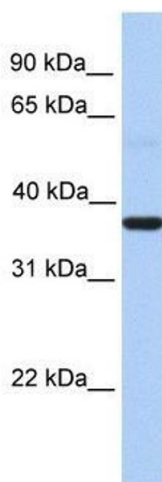
## Application Details

Application Notes:	WB: 0.2-1 µg/mL Optimal conditions should be determined by the investigator.
Comment:	ZC3H15 Blocking Peptide, catalog no. 33R-8484, is also available for use as a blocking control in assays to test for specificity of this ZC3H15 antibody
Restrictions:	For Research Use only

## Handling

Format:	Lyophilized
Concentration:	Lot specific
Buffer:	Lyophilized powder. Add 50 µL of distilled water. Final antibody concentration is 1 mg/mL in PBS buffer.
Handling Advice:	Avoid repeated freeze/thaw cycles.
Storage:	4 °C/-20 °C
Storage Comment:	Store at 4 °C, following reconstitution, aliquot and store at -20 °C.

## Images



### Western Blotting

**Image 1.** ZC3H15 antibody used at 0.2-1 ug/ml to detect target protein.