

Datasheet for ABIN928418  
**anti-ZFYVE28 antibody (N-Term)**



[Go to Product page](#)

1 Image

## Overview

Quantity:	100 µL
Target:	ZFYVE28
Binding Specificity:	N-Term
Reactivity:	Human, Mouse, Rat, Zebrafish (Danio rerio)
Host:	Rabbit
Clonality:	Polyclonal
Conjugate:	This ZFYVE28 antibody is un-conjugated
Application:	Western Blotting (WB)

## Product Details

Immunogen:	ZFYVE28 antibody was raised in rabbit using the N terminal of ZFYVE28 as the immunogen
Cross-Reactivity:	Mouse (Murine), Rat (Rattus), Zebrafish (Brachydanio rerio)
Purification:	Purified

## Target Details

Target:	ZFYVE28
Alternative Name:	ZFYVE28 ( <a href="#">ZFYVE28 Products</a> )
Background:	ZFYVE28 contains 1 FYVE-type zinc finger. The exact function of ZFYVE28 remains unknown. Synonyms: Polyclonal ZFYVE28 antibody, Anti-ZFYVE28 antibody, zinc finger, FYVE domain containing 28 antibody, MGC43699 antibody, MGC61592 antibody.

## Target Details

---

Pathways: [EGFR Signaling Pathway](#)

## Application Details

---

Application Notes:	WB: 0.2-1 µg/mL Optimal conditions should be determined by the investigator.
Comment:	ZFYVE28 Blocking Peptide, catalog no. 33R-5491, is also available for use as a blocking control in assays to test for specificity of this ZFYVE28 antibody
Restrictions:	For Research Use only

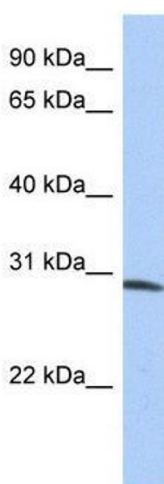
## Handling

---

Format:	Lyophilized
Concentration:	Lot specific
Buffer:	Lyophilized powder. Add 50 µL of distilled water. Final antibody concentration is 1 mg/mL in PBS buffer.
Handling Advice:	Avoid repeated freeze/thaw cycles.
Storage:	4 °C/-20 °C
Storage Comment:	Store at 4 °C, following reconstitution, aliquot and store at -20 °C.

## Images

---



### Western Blotting

**Image 1.** ZFYVE28 antibody used at 0.2-1 ug/ml to detect target protein.