

## Datasheet for ABIN928422 **anti-SMYD3 antibody (C-Term)**



[Go to Product page](#)

### 1 Image

#### Overview

Quantity:	100 µL
Target:	SMYD3
Binding Specificity:	C-Term
Reactivity:	Human, Mouse, Rat, Cow, Pig, Drosophila melanogaster
Host:	Rabbit
Clonality:	Polyclonal
Conjugate:	This SMYD3 antibody is un-conjugated
Application:	Western Blotting (WB)

#### Product Details

Immunogen:	SMYD3 antibody was raised in rabbit using the C terminal of SMYD3 as the immunogen
Cross-Reactivity:	Mouse (Murine), Rat (Rattus), Pig (Porcine), Cow (Bovine), Fruit Fly (Drosophila melanogaster)
Purification:	Purified

#### Target Details

Target:	SMYD3
Alternative Name:	SMYD3 ( <a href="#">SMYD3 Products</a> )
Background:	SMYD3 is a histone methyltransferase that plays a role in transcriptional regulation as a member of an RNA polymerase complex. SMYD3 is a histone methyltransferase that plays a role in transcriptional regulation as a member of an RNA polymerase complex. Synonyms: Polyclonal SMYD3 antibody, Anti-SMYD3 antibody, SET and MYND domain containing 3

## Target Details

antibody, FLJ21080 antibody, MGC104324 antibody, ZMYND1 antibody, ZNFN3A1 antibody, bA74P14.1 antibody.

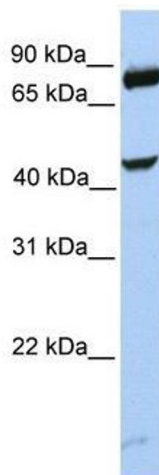
## Application Details

Application Notes:	WB: 0.2-1 µg/mL Optimal conditions should be determined by the investigator.
Comment:	SMYD3 Blocking Peptide, catalog no. 33R-5022, is also available for use as a blocking control in assays to test for specificity of this SMYD3 antibody
Restrictions:	For Research Use only

## Handling

Format:	Lyophilized
Concentration:	Lot specific
Buffer:	Lyophilized powder. Add 50 µL of distilled water. Final antibody concentration is 1 mg/mL in PBS buffer.
Handling Advice:	Avoid repeated freeze/thaw cycles.
Storage:	4 °C/-20 °C
Storage Comment:	Store at 4 °C, following reconstitution, aliquot and store at -20 °C.

## Images



### Western Blotting

**Image 1.** SMYD3 antibody used at 0.2-1 ug/ml to detect target protein.