

Datasheet for ABIN928444
anti-URI1 antibody (Middle Region)



[Go to Product page](#)

1 Image

Overview

Quantity:	100 µL
Target:	URI1
Binding Specificity:	Middle Region
Reactivity:	Human, Mouse, Rat, Cow, Xenopus laevis
Host:	Rabbit
Clonality:	Polyclonal
Conjugate:	This URI1 antibody is un-conjugated
Application:	Western Blotting (WB)

Product Details

Immunogen:	C19 orf2 antibody was raised in rabbit using the middle region of C19 RF2 as the immunogen
Cross-Reactivity:	Rat (Rattus), Mouse (Murine), Cow (Bovine), Frog
Purification:	Purified

Target Details

Target:	URI1
Alternative Name:	C19orf2 (URI1 Products)
Background:	The function of the C19orf2 protein remains unknown. The protein encoded by this gene binds to RNA polymerase II subunit 5 (RPB5) and negatively modulates transcription through its binding to RPB5. The encoded protein seems to have inhibitory effects on various types of activated transcription, but it requires the RPB5-binding region. This protein acts as a

Target Details

corepressor. It is suggested that it may require signaling processes for its function or that it negatively modulates genes in the chromatin structure. Synonyms: Polyclonal C19orf2 antibody, Anti-C19orf2 antibody, FLJ10575 antibody, NNX3 antibody, RMP antibody, URI antibody.

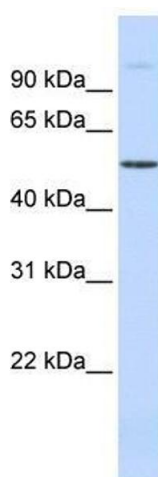
Application Details

Application Notes:	WB: 0.2-1 µg/mL Optimal conditions should be determined by the investigator.
Comment:	C19orf2 Blocking Peptide, catalog no. 33R-6699, is also available for use as a blocking control in assays to test for specificity of this C19orf2 antibody
Restrictions:	For Research Use only

Handling

Format:	Lyophilized
Concentration:	Lot specific
Buffer:	Lyophilized powder. Add 50 µL of distilled water. Final antibody concentration is 1 mg/mL in PBS buffer.
Handling Advice:	Avoid repeated freeze/thaw cycles.
Storage:	4 °C/-20 °C
Storage Comment:	Store at 4 °C, following reconstitution, aliquot and store at -20 °C.

Images



Western Blotting

Image 1. C19orf2 antibody used at 0.2-1 µg/ml to detect target protein.