

Datasheet for ABIN928454
anti-SRFBP1 antibody (Middle Region)



[Go to Product page](#)

1 Image

Overview

Quantity:	100 µL
Target:	SRFBP1
Binding Specificity:	Middle Region
Reactivity:	Human, Mouse, Rat, Cow, Dog, Zebrafish (Danio rerio), Xenopus laevis, Chicken
Host:	Rabbit
Clonality:	Polyclonal
Conjugate:	This SRFBP1 antibody is un-conjugated
Application:	Western Blotting (WB)

Product Details

Immunogen:	SRFBP1 antibody was raised in rabbit using the middle region of SRFBP1 as the immunogen
Cross-Reactivity:	Mouse (Murine), Rat (Rattus), Dog (Canine), Cow (Bovine), Chicken, Zebrafish (Brachydanio rerio), Frog
Purification:	Purified

Target Details

Target:	SRFBP1
Alternative Name:	SRFBP1 (SRFBP1 Products)
Background:	SRFBP1 may be involved in regulating transcriptional activation of cardiac genes during the aging process. It may play a role in biosynthesis and/or processing of SLC2A4 in adipose cells. Synonyms: Polyclonal SRFBP1 antibody, Anti-SRFBP1 antibody, serum response factor binding

Target Details

protein 1 antibody, BUD22 antibody, FLJ25286 antibody, P49 antibody, Rib1 antibody, STRAP antibody, p49/STRAP antibody.

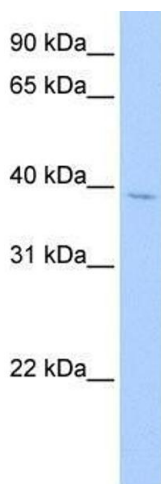
Application Details

Application Notes:	WB: 0.2-1 µg/mL Optimal conditions should be determined by the investigator.
Comment:	SRFBP1 Blocking Peptide, catalog no. 33R-2354, is also available for use as a blocking control in assays to test for specificity of this SRFBP1 antibody
Restrictions:	For Research Use only

Handling

Format:	Lyophilized
Concentration:	Lot specific
Buffer:	Lyophilized powder. Add 50 µL of distilled water. Final antibody concentration is 1 mg/mL in PBS buffer.
Handling Advice:	Avoid repeated freeze/thaw cycles.
Storage:	4 °C/-20 °C
Storage Comment:	Store at 4 °C, following reconstitution, aliquot and store at -20 °C.

Images



Western Blotting

Image 1. SRFBP1 antibody used at 0.2-1 ug/ml to detect target protein.