

Datasheet for ABIN928456
anti-DCP1B antibody (N-Term)



[Go to Product page](#)

1 Image

Overview

Quantity:	100 µL
Target:	DCP1B
Binding Specificity:	N-Term
Reactivity:	Human, Mouse, Rat, Cow, Dog, Chicken
Host:	Rabbit
Clonality:	Polyclonal
Application:	Western Blotting (WB)

Product Details

Immunogen:	DCP1 B antibody was raised in rabbit using the N terminal of DCP1 as the immunogen
Cross-Reactivity:	Mouse (Murine), Rat (Rattus), Dog (Canine), Cow (Bovine), Chicken
Purification:	Purified

Target Details

Target:	DCP1B
Alternative Name:	DCP1B (DCP1B Products)
Background:	<p>DCP1B may play a role in the degradation of mRNAs, both in normal mRNA turnover and in nonsense-mediated mRNA decay. It may remove the 7-methyl guanine cap structure from mRNA molecules, yielding a 5'-phosphorylated mRNA fragment and 7m-GDP. DCP1B is a core component of the mRNA decapping complex, a key factor in the regulation of mRNA decay.</p> <p>Synonyms: Polyclonal DCP1B antibody, Anti-DCP1B antibody, DCP1 decapping enzyme</p>

Target Details

homolog B, *S. cerevisiae* antibody, DCP1 antibody, hDcp1b antibody.

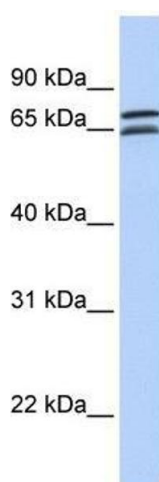
Application Details

Application Notes:	WB: 0.2-1 µg/mL Optimal conditions should be determined by the investigator.
Comment:	DCP1B Blocking Peptide, catalog no. 33R-9166, is also available for use as a blocking control in assays to test for specificity of this DCP1B antibody
Restrictions:	For Research Use only

Handling

Format:	Lyophilized
Concentration:	Lot specific
Buffer:	Lyophilized powder. Add 50 µL of distilled water. Final antibody concentration is 1 mg/mL in PBS buffer.
Handling Advice:	Avoid repeated freeze/thaw cycles.
Storage:	4 °C/-20 °C
Storage Comment:	Store at 4 °C, following reconstitution, aliquot and store at -20 °C.

Images



Western Blotting

Image 1. DCP1B antibody used at 0.2-1 ug/ml to detect target protein.