

Datasheet for ABIN928463 **anti-LIN9 antibody (N-Term)**



[Go to Product page](#)

1 Image

Overview

Quantity:	100 µL
Target:	LIN9
Binding Specificity:	N-Term
Reactivity:	Human, Mouse, Rat, Zebrafish (Danio rerio), Xenopus laevis, Chicken
Host:	Rabbit
Clonality:	Polyclonal
Conjugate:	This LIN9 antibody is un-conjugated
Application:	Western Blotting (WB)

Product Details

Immunogen:	LIN9 antibody was raised in rabbit using the N terminal of LIN9 as the immunogen
Cross-Reactivity:	Mouse (Murine), Rat (Rattus), Chicken, Frog, Zebrafish (Brachydanio rerio)
Purification:	Purified

Target Details

Target:	LIN9
Alternative Name:	LIN9 (LIN9 Products)
Background:	LIN9 belongs to the lin-9 family and acts as a tumor suppressor. It inhibits DNA synthesis. Its ability to inhibit oncogenic transformation is mediated through its association with RB1. LIN9 plays a role in the expression of genes required for the G1/S transition. Synonyms: Polyclonal LIN9 antibody, Anti-LIN9 antibody, lin-9 homolog, C. elegans antibody, TGS antibody, BARA

Target Details

antibody, TGS1 antibody, Lin-9 antibody, BARPsv antibody.

Pathways: [Cell Division Cycle, Mitotic G1-G1/S Phases](#)

Application Details

Application Notes: WB: 0.2-1 µg/mL
Optimal conditions should be determined by the investigator.

Comment: LIN9 Blocking Peptide, catalog no. 33R-9263, is also available for use as a blocking control in assays to test for specificity of this LIN9 antibody

Restrictions: For Research Use only

Handling

Format: Lyophilized

Concentration: Lot specific

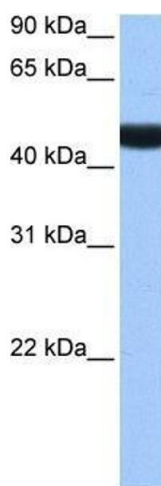
Buffer: Lyophilized powder. Add 50 µL of distilled water. Final antibody concentration is 1 mg/mL in PBS buffer.

Handling Advice: Avoid repeated freeze/thaw cycles.

Storage: 4 °C/-20 °C

Storage Comment: Store at 4 °C, following reconstitution, aliquot and store at -20 °C.

Images



Western Blotting

Image 1. LIN9 antibody used at 0.2-1 ug/ml to detect target protein.