

Datasheet for ABIN928464
anti-ZFYVE1 antibody (N-Term)



[Go to Product page](#)

1 Image

Overview

Quantity:	100 µL
Target:	ZFYVE1
Binding Specificity:	N-Term
Reactivity:	Human, Mouse, Rat, Cow, Dog, Xenopus laevis, Chicken
Host:	Rabbit
Clonality:	Polyclonal
Conjugate:	This ZFYVE1 antibody is un-conjugated
Application:	Western Blotting (WB)

Product Details

Immunogen:	ZFYVE1 antibody was raised in rabbit using the N terminal of ZFYVE1 as the immunogen
Cross-Reactivity:	Mouse (Murine), Rat (Rattus), Cow (Bovine), Chicken, Dog (Canine), Frog
Purification:	Purified

Target Details

Target:	ZFYVE1
Alternative Name:	ZFYVE1 (ZFYVE1 Products)
Background:	ZFYVE1 contains two zinc-binding FYVE domains in tandem. This protein binds to phosphatidylinositol-3-phosphate (PtdIns3P) through its FYVE-type zinc finger. It displays a predominantly Golgi, endoplasmic reticulum and vesicular distribution. Alternatively spliced transcript variants have been found for this gene, and they encode two isoforms with different

Target Details

sizes. Synonyms: Polyclonal ZFYVE1 antibody, Anti-ZFYVE1 antibody, zinc finger, FYVE domain containing 1 antibody, DFCP1 antibody, KIAA1589 antibody, TAFF1 antibody, ZNFN2A1 antibody.

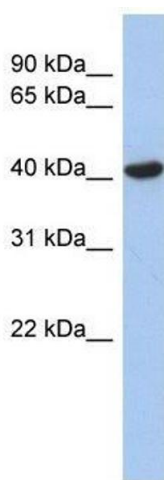
Application Details

Application Notes:	WB: 0.2-1 µg/mL Optimal conditions should be determined by the investigator.
Comment:	ZFYVE1 Blocking Peptide, catalog no. 33R-3650, is also available for use as a blocking control in assays to test for specificity of this ZFYVE1 antibody
Restrictions:	For Research Use only

Handling

Format:	Lyophilized
Concentration:	Lot specific
Buffer:	Lyophilized powder. Add 50 µL of distilled water. Final antibody concentration is 1 mg/mL in PBS buffer.
Handling Advice:	Avoid repeated freeze/thaw cycles.
Storage:	4 °C/-20 °C
Storage Comment:	Store at 4 °C, following reconstitution, aliquot and store at -20 °C.

Images



Western Blotting

Image 1. ZFYVE1 antibody used at 0.2-1 ug/ml to detect target protein.