

Datasheet for ABIN928479
anti-MDFIC antibody (Middle Region)



[Go to Product page](#)

1 Image

Overview

Quantity:	100 µL
Target:	MDFIC
Binding Specificity:	Middle Region
Reactivity:	Human, Rabbit, Pig, Cow
Host:	Rabbit
Clonality:	Polyclonal
Conjugate:	This MDFIC antibody is un-conjugated
Application:	Western Blotting (WB)

Product Details

Immunogen:	MDFIC antibody was raised in rabbit using the middle region of MDFIC as the immunogen
Cross-Reactivity:	Rabbit, Pig (Porcine), Cow (Bovine)
Purification:	Purified

Target Details

Target:	MDFIC
Alternative Name:	MDFIC (MDFIC Products)
Background:	MDFIC is a member of a family of proteins characterized by a specific cysteine-rich C-terminal domain, which is involved in transcriptional regulation of viral genome expression. Alternative translation initiation from an upstream non-AUG (GUG), and an in-frame, downstream AUG codon, results in the production of two isoforms, p40 and p32, respectively, which have

Target Details

different subcellular localization, p32 is mainly found in the cytoplasm, whereas p40 is targeted to the nucleolus. Both isoforms have transcriptional regulatory activity that is attributable to the cysteine-rich C-terminal domain. Synonyms: Polyclonal MDFIC antibody, Anti-MDFIC antibody, MyoD family inhibitor domain containing antibody, HIC antibody.

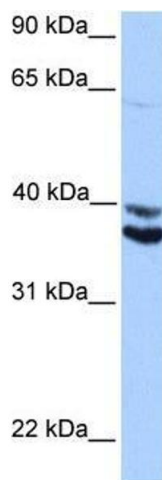
Application Details

Application Notes:	WB: 0.2-1 µg/mL Optimal conditions should be determined by the investigator.
Comment:	MDFIC Blocking Peptide, catalog no. 33R-7305, is also available for use as a blocking control in assays to test for specificity of this MDFIC antibody
Restrictions:	For Research Use only

Handling

Format:	Lyophilized
Concentration:	Lot specific
Buffer:	Lyophilized powder. Add 50 µL of distilled water. Final antibody concentration is 1 mg/mL in PBS buffer.
Handling Advice:	Avoid repeated freeze/thaw cycles.
Storage:	4 °C/-20 °C
Storage Comment:	Store at 4 °C, following reconstitution, aliquot and store at -20 °C.

Images



Western Blotting

Image 1. MDFIC antibody used at 0.2-1 µg/ml to detect target protein.