

Datasheet for ABIN928487  
**anti-LOC727817 antibody (N-Term)**



[Go to Product page](#)

1 Image

## Overview

Quantity:	100 µL
Target:	LOC727817
Binding Specificity:	N-Term
Reactivity:	Human
Host:	Rabbit
Clonality:	Polyclonal
Conjugate:	This LOC727817 antibody is un-conjugated
Application:	Western Blotting (WB)

## Product Details

Immunogen:	LOC727817 antibody was raised in rabbit using the N terminal of LOC727817 as the immunogen
Purification:	Purified

## Target Details

Target:	LOC727817
Alternative Name:	LOC727817 ( <a href="#">LOC727817 Products</a> )
Background:	LOC727817 is Involved in cell differentiation and/or proliferation. Synonyms: Polyclonal LOC727817 antibody, Anti-LOC727817 antibody, hypothetical LOC727817 antibody.

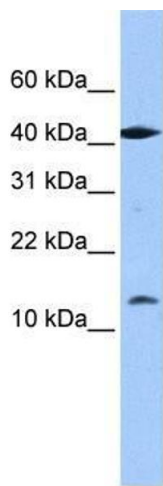
## Application Details

Application Notes:	WB: 0.2-1 µg/mL Optimal conditions should be determined by the investigator.
Comment:	LOC727817 Blocking Peptide, catalog no. 33R-6037, is also available for use as a blocking control in assays to test for specificity of this LOC727817 antibody
Restrictions:	For Research Use only

## Handling

Format:	Lyophilized
Concentration:	Lot specific
Buffer:	Lyophilized powder. Add 50 µL of distilled water. Final antibody concentration is 1 mg/mL in PBS buffer.
Handling Advice:	Avoid repeated freeze/thaw cycles.
Storage:	4 °C/-20 °C
Storage Comment:	Store at 4 °C, following reconstitution, aliquot and store at -20 °C.

## Images



### Western Blotting

**Image 1.** LOC727817 antibody used at 0.2-1 µg/ml to detect target protein.