

Datasheet for ABIN928504
anti-ZFP 570-like antibody (Middle Region)



[Go to Product page](#)

1 Image

Overview

Quantity:	100 µL
Target:	ZFP 570-like (LOC344065)
Binding Specificity:	Middle Region
Reactivity:	Human, Mouse, Rat
Host:	Rabbit
Clonality:	Polyclonal
Application:	Western Blotting (WB)

Product Details

Immunogen:	LOC344065 antibody was raised in rabbit using the middle region of LOC344065 as the immunogen
Cross-Reactivity:	Mouse (Murine), Rat (Rattus)
Purification:	Purified

Target Details

Target:	ZFP 570-like (LOC344065)
Alternative Name:	LOC344065 (LOC344065 Products)
Background:	LOC344065 is Involved in cell differentiation and/or proliferation. Synonyms: Polyclonal LOC344065 antibody, Anti-LOC344065 antibody, similar to zinc finger protein 135, clone pHZ-17 antibody.

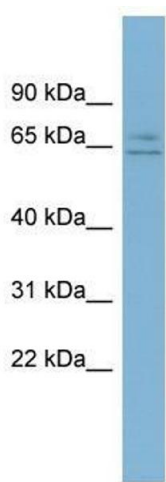
Application Details

Application Notes:	WB: 0.2-1 µg/mL Optimal conditions should be determined by the investigator.
Comment:	LOC344065 Blocking Peptide, catalog no. 33R-3351, is also available for use as a blocking control in assays to test for specificity of this LOC344065 antibody
Restrictions:	For Research Use only

Handling

Format:	Lyophilized
Concentration:	Lot specific
Buffer:	Lyophilized powder. Add 50 µL of distilled water. Final antibody concentration is 1 mg/mL in PBS buffer.
Handling Advice:	Avoid repeated freeze/thaw cycles.
Storage:	4 °C/-20 °C
Storage Comment:	Store at 4 °C, following reconstitution, aliquot and store at -20 °C.

Images



Western Blotting

Image 1. LOC344065 antibody used at 0.2-1 µg/ml to detect target protein.