

Datasheet for ABIN928521
anti-MSL3L2 antibody (Middle Region)



[Go to Product page](#)

1 Image

Overview

Quantity:	100 µL
Target:	MSL3L2
Binding Specificity:	Middle Region
Reactivity:	Human, Cow, Dog
Host:	Rabbit
Clonality:	Polyclonal
Conjugate:	This MSL3L2 antibody is un-conjugated
Application:	Western Blotting (WB)

Product Details

Immunogen:	MSL3 L2 antibody was raised in rabbit using the middle region of MSL3 2 as the immunogen
Cross-Reactivity:	Cow (Bovine), Dog (Canine)
Purification:	Purified

Target Details

Target:	MSL3L2
Alternative Name:	MSL3L2 (MSL3L2 Products)
Background:	MSL3L2 contains 1 chromo domain. It may be involved in chromatin remodeling and transcriptional regulation. Synonyms: Polyclonal MSL3L2 antibody, Anti-MSL3L2 antibody, male-specific lethal 3-like 2, Drosophila antibody.

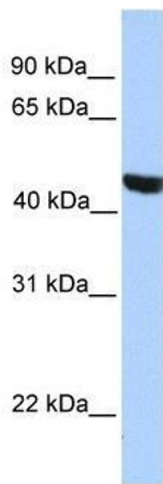
Application Details

Application Notes:	WB: 0.2-1 µg/mL Optimal conditions should be determined by the investigator.
Comment:	MSL3L2 Blocking Peptide, catalog no. 33R-2515, is also available for use as a blocking control in assays to test for specificity of this MSL3L2 antibody
Restrictions:	For Research Use only

Handling

Format:	Lyophilized
Concentration:	Lot specific
Buffer:	Lyophilized powder. Add 50 µL of distilled water. Final antibody concentration is 1 mg/mL in PBS buffer.
Handling Advice:	Avoid repeated freeze/thaw cycles.
Storage:	4 °C/-20 °C
Storage Comment:	Store at 4 °C, following reconstitution, aliquot and store at -20 °C.

Images



Western Blotting

Image 1. Western Blot showing MSL3L2 antibody used at a concentration of 1-2 µg/ml to detect its target protein.