

## Datasheet for ABIN928529 **anti-INTS12 antibody (N-Term)**



[Go to Product page](#)

### 1 Image

#### Overview

Quantity:	100 µL
Target:	INTS12
Binding Specificity:	N-Term
Reactivity:	Human, Mouse, Rat, Cow, Dog, Chicken
Host:	Rabbit
Clonality:	Polyclonal
Conjugate:	This INTS12 antibody is un-conjugated
Application:	Western Blotting (WB)

#### Product Details

Immunogen:	INTS12 antibody was raised in rabbit using the N terminal of INTS12 as the immunogen
Cross-Reactivity:	Mouse (Murine), Rat (Rattus), Dog (Canine), Cow (Bovine), Chicken
Purification:	Purified

#### Target Details

Target:	INTS12
Alternative Name:	INTS12 ( <a href="#">INTS12 Products</a> )
Background:	INTS12 is a subunit of the Integrator complex, which associates with the C-terminal domain of RNA polymerase II large subunit (POLR2A) and mediates 3-prime end processing of small nuclear RNAs U1 and U2. Synonyms: Polyclonal INTS12 antibody, Anti-INTS12 antibody, integrator complex subunit 12 antibody, INT12 antibody, PHF22 antibody, SBBI22 antibody.

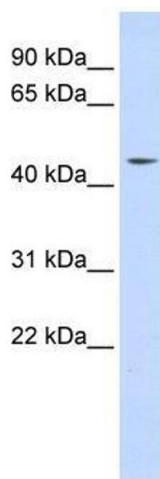
## Application Details

Application Notes:	WB: 0.2-1 µg/mL Optimal conditions should be determined by the investigator.
Comment:	INTS12 Blocking Peptide, catalog no. 33R-1921, is also available for use as a blocking control in assays to test for specificity of this INTS12 antibody
Restrictions:	For Research Use only

## Handling

Format:	Lyophilized
Concentration:	Lot specific
Buffer:	Lyophilized powder. Add 50 µL of distilled water. Final antibody concentration is 1 mg/mL in PBS buffer.
Handling Advice:	Avoid repeated freeze/thaw cycles.
Storage:	4 °C/-20 °C
Storage Comment:	Store at 4 °C, following reconstitution, aliquot and store at -20 °C.

## Images



### Western Blotting

**Image 1.** Western Blot showing INTS12 antibody used at a concentration of 1-2 ug/ml to detect its target protein.