

Datasheet for ABIN928530 **anti-PHF23 antibody (N-Term)**



[Go to Product page](#)

1 Image

Overview

| | |
|----------------------|--------------------------------------|
| Quantity: | 100 µL |
| Target: | PHF23 |
| Binding Specificity: | N-Term |
| Reactivity: | Human, Cow, Rat, Mouse, Dog |
| Host: | Rabbit |
| Clonality: | Polyclonal |
| Conjugate: | This PHF23 antibody is un-conjugated |
| Application: | Western Blotting (WB) |

Product Details

| | |
|-------------------|--|
| Immunogen: | PHF23 antibody was raised in rabbit using the N terminal of PHF23 as the immunogen |
| Cross-Reactivity: | Mouse (Murine), Rat (Rattus), Cow (Bovine), Dog (Canine) |
| Purification: | Purified |

Target Details

| | |
|-------------------|---|
| Target: | PHF23 |
| Alternative Name: | PHF23 (PHF23 Products) |
| Background: | PHF23 contains 1 PHD-type zinc finger. It belongs to the PHF23 family. A chromosomal aberration involving PHF23, translocation t(11,17)(p15,p13) with NUP98, is found in a patient with acute myeloid leukemia (AML). Synonyms: Polyclonal PHF23 antibody, Anti-PHF23 antibody, PHD finger protein 23 antibody, FLJ16355 antibody, FLJ22884 antibody, MGC2941 |

Target Details

antibody, hJUNE-1b antibody.

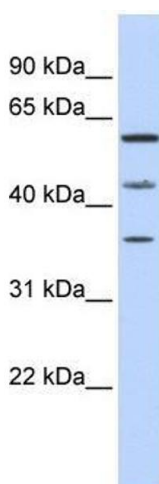
Application Details

| | |
|--------------------|--|
| Application Notes: | WB: 0.2-1 µg/mL Optimal conditions should be determined by the investigator. |
| Comment: | PHF23 Blocking Peptide, catalog no. 33R-4876, is also available for use as a blocking control in assays to test for specificity of this PHF23 antibody |
| Restrictions: | For Research Use only |

Handling

| | |
|------------------|--|
| Format: | Lyophilized |
| Concentration: | Lot specific |
| Buffer: | Lyophilized powder. Add 50 µL of distilled water. Final antibody concentration is 1 mg/mL in PBS buffer. |
| Handling Advice: | Avoid repeated freeze/thaw cycles. |
| Storage: | 4 °C/-20 °C |
| Storage Comment: | Store at 4 °C, following reconstitution, aliquot and store at -20 °C. |

Images



Western Blotting

Image 1. PHF23 antibody used at 0.2-1 ug/ml to detect target protein.