

Datasheet for ABIN928535 **anti-PHC2 antibody (N-Term)**



[Go to Product page](#)

1 Image

Overview

Quantity:	100 µL
Target:	PHC2 (PhC2)
Binding Specificity:	N-Term
Reactivity:	Human
Host:	Rabbit
Clonality:	Polyclonal
Conjugate:	This PHC2 antibody is un-conjugated
Application:	Western Blotting (WB)

Product Details

Immunogen:	PHC2 antibody was raised in rabbit using the N terminal of PHC2 as the immunogen
Purification:	Purified

Target Details

Target:	PHC2 (PhC2)
Alternative Name:	PHC2 (PhC2 Products)
Background:	In <i>Drosophila melanogaster</i> , the 'Polycomb' group (PcG) of genes are part of a cellular memory system that is responsible for the stable inheritance of gene activity. PcG proteins form a large multimeric, chromatin-associated protein complex. The protein encoded by this gene has homology to the <i>Drosophila</i> PcG protein 'polyhomeotic' (Ph) and is known to heterodimerize with EDR1 and colocalize with BMI1 in interphase nuclei of human cells. The specific function in

Target Details

human cells has not yet been determined. Synonyms: Polyclonal PHC2 antibody, Anti-PHC2 antibody, polyhomeotic homolog 2, Drosophila antibody, EDR2 antibody, HPH2 antibody, MGC163502 antibody, PH2 antibody.

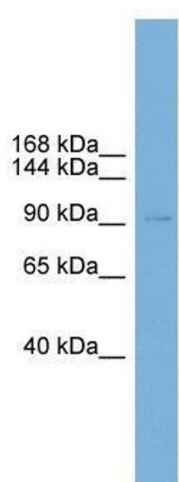
Application Details

Application Notes:	WB: 0.2-1 µg/mL Optimal conditions should be determined by the investigator.
Comment:	PHC2 Blocking Peptide, catalog no. 33R-3299, is also available for use as a blocking control in assays to test for specificity of this PHC2 antibody
Restrictions:	For Research Use only

Handling

Format:	Lyophilized
Concentration:	Lot specific
Buffer:	Lyophilized powder. Add 50 µL of distilled water. Final antibody concentration is 1 mg/mL in PBS buffer.
Handling Advice:	Avoid repeated freeze/thaw cycles.
Storage:	4 °C/-20 °C
Storage Comment:	Store at 4 °C, following reconstitution, aliquot and store at -20 °C.

Images



Western Blotting

Image 1. PHC2 antibody used at 0.2-1 ug/ml to detect target protein.