

## Datasheet for ABIN928538 **anti-FZR1 antibody (N-Term)**



[Go to Product page](#)

### 1 Image

#### Overview

Quantity:	100 µL
Target:	FZR1
Binding Specificity:	N-Term
Reactivity:	Human, Mouse
Host:	Rabbit
Clonality:	Polyclonal
Conjugate:	This FZR1 antibody is un-conjugated
Application:	Western Blotting (WB)

#### Product Details

Immunogen:	Fzr1 antibody was raised in rabbit using the N terminal of Fzr1 as the immunogen
Cross-Reactivity:	Mouse (Murine)
Purification:	Purified

#### Target Details

Target:	FZR1
Alternative Name:	Fzr1 ( <a href="#">FZR1 Products</a> )
Background:	Fzr1 is the key regulator of ligase activity of the anaphase promoting complex/cyclosome (APC/C), which confers substrate specificity upon the complex. Fzr1 associates with the APC/C in late mitosis, in replacement of CDC20, and activates the APC/C during anaphase and telophase. The APC/C remains active in degrading substrates to ensure that positive regulators

## Target Details

---

of the cell cycle do not accumulate prematurely. At the G1/S transition FZR1 is phosphorylated, leading to its dissociation from the APC/C. Following DNA damage, it is required for the G2 DNA damage checkpoint: its dephosphorylation and reassociation with the APC/C leads to the ubiquitination of PLK1, preventing entry into mitosis. Synonyms: Polyclonal Fzr1 antibody, Anti-Fzr1 antibody, fizzy/cell division cycle 20 related 1, Drosophila antibody, AW108046 antibody, Cdh1 antibody, FZR antibody, FZR2 antibody, Fyr antibody, HCDH antibody, HCDH1 antibody.

Pathways: [DNA Replication, Synthesis of DNA](#)

## Application Details

---

Application Notes: WB: 0.2-1 µg/mL  
Optimal conditions should be determined by the investigator.

Comment: Fzr1 Blocking Peptide, catalog no. 33R-8121, is also available for use as a blocking control in assays to test for specificity of this Fzr1 antibody

Restrictions: For Research Use only

## Handling

---

Format: Lyophilized

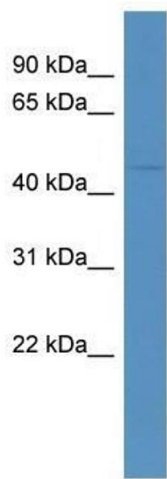
Concentration: Lot specific

Buffer: Lyophilized powder. Add 50 µL of distilled water. Final antibody concentration is 1 mg/mL in PBS buffer.

Handling Advice: Avoid repeated freeze/thaw cycles.

Storage: 4 °C/-20 °C

Storage Comment: Store at 4 °C, following reconstitution, aliquot and store at -20 °C.



### Western Blotting

**Image 1.** Fzr1 antibody used at 0.2-1 ug/ml to detect target protein.